

# The Achievement Gap & Success for All Students

Student Success Data  
Fall 2010 Faculty Institute

# The Achievement Gap & Success for All Students

- Student Success Data
  - Fall 2010 Freshmen Characteristics
  - Retention and Graduation Patterns
  - FY 2011 Progress Report
    - Closing the Achievement Gap (USM)

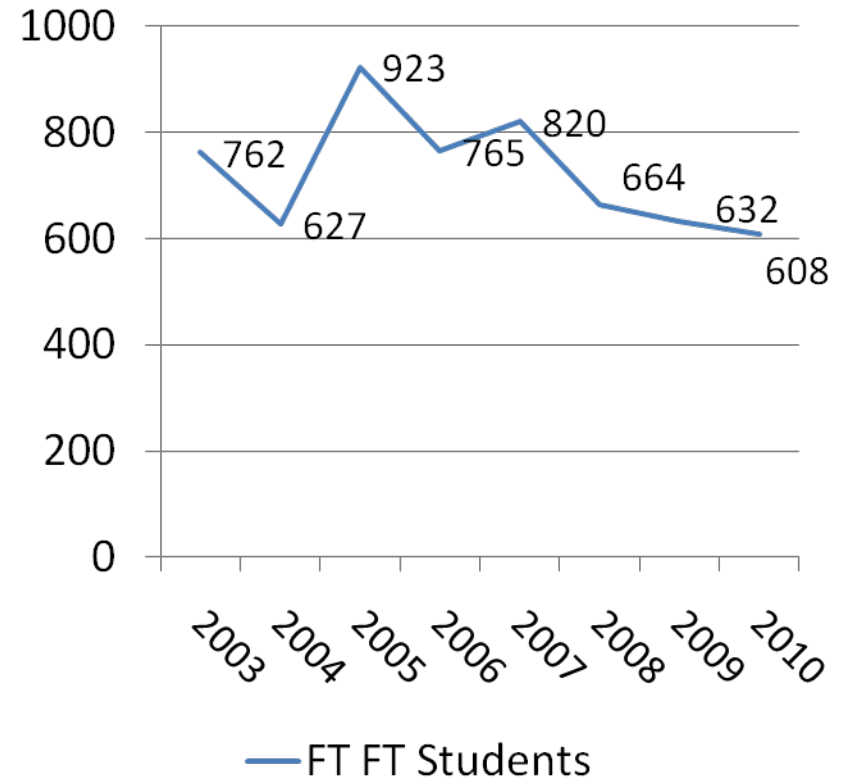
# Freshmen Characteristics

## Fall 2010

First-time, full-time, degree-seeking freshmen class

- 608 students
- 58% female
- 87% (529) from Maryland
  - 47% Prince George's County
  - 9% from Montgomery
  - 6% from Baltimore City
- Average SAT
  - Verbal - 450
  - Math - 442

## Trends in First-Time Cohorts



# Freshmen Developmental Characteristics

Cohort	N	N and Percent of Cohort			
		Needing Any Developmental Courses	Needing Math (MATH 99)	Needing English (ENGL 100)	Needing Reading (READ 100)
Fall 2010	608	517 (85%)	494 (81%)	103 (17%)	187 (31%)
Fall 2009	632	592 (94%)	495 (78%)	149 (24%)	133(21%)

# Fall 2010 Developmental Coursework & Spring 2011 Credit Coursework

	Enrolled In Dev Ed Course in Fall	Passed Dev Ed Course in Fall	Passed & Enrolled in Credit in Spring	Passed 1 <sup>st</sup> Credit Course in Spring
MATH 99	438/89%	228/52%	166/73%	64/39%
ENGL 100	72/70%	45/63%	35/78%	16/46%
READ 100	79/42%	25/35%		

# 2010 Cohort

## Year 1 Academic Status

- Retained to Spring 2011 – 92%
- Cumulative credits earned

	All Fall 2010 Cohort	College Ready
Credits Earned	Percent of Cohort	Percent of Cohort
0	2%	1%
1-12	15%	9%
13-18	14%	7%
19-24	20%	13%
25-30	32%	35%
>30	17%	35%

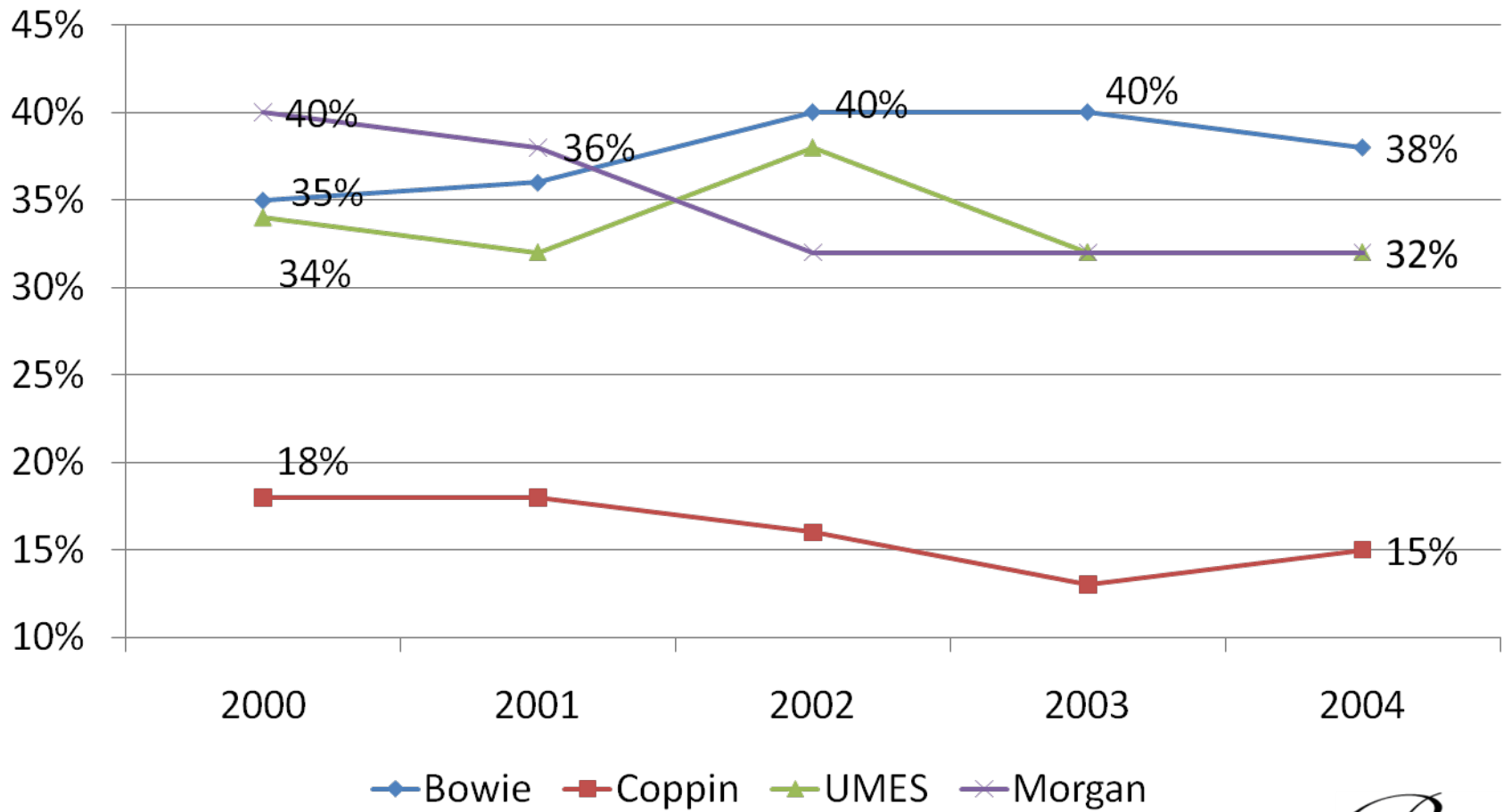
- Percent in good academic standing (preliminary) – 70% All/80% College Ready

# Retention and Graduation Patterns

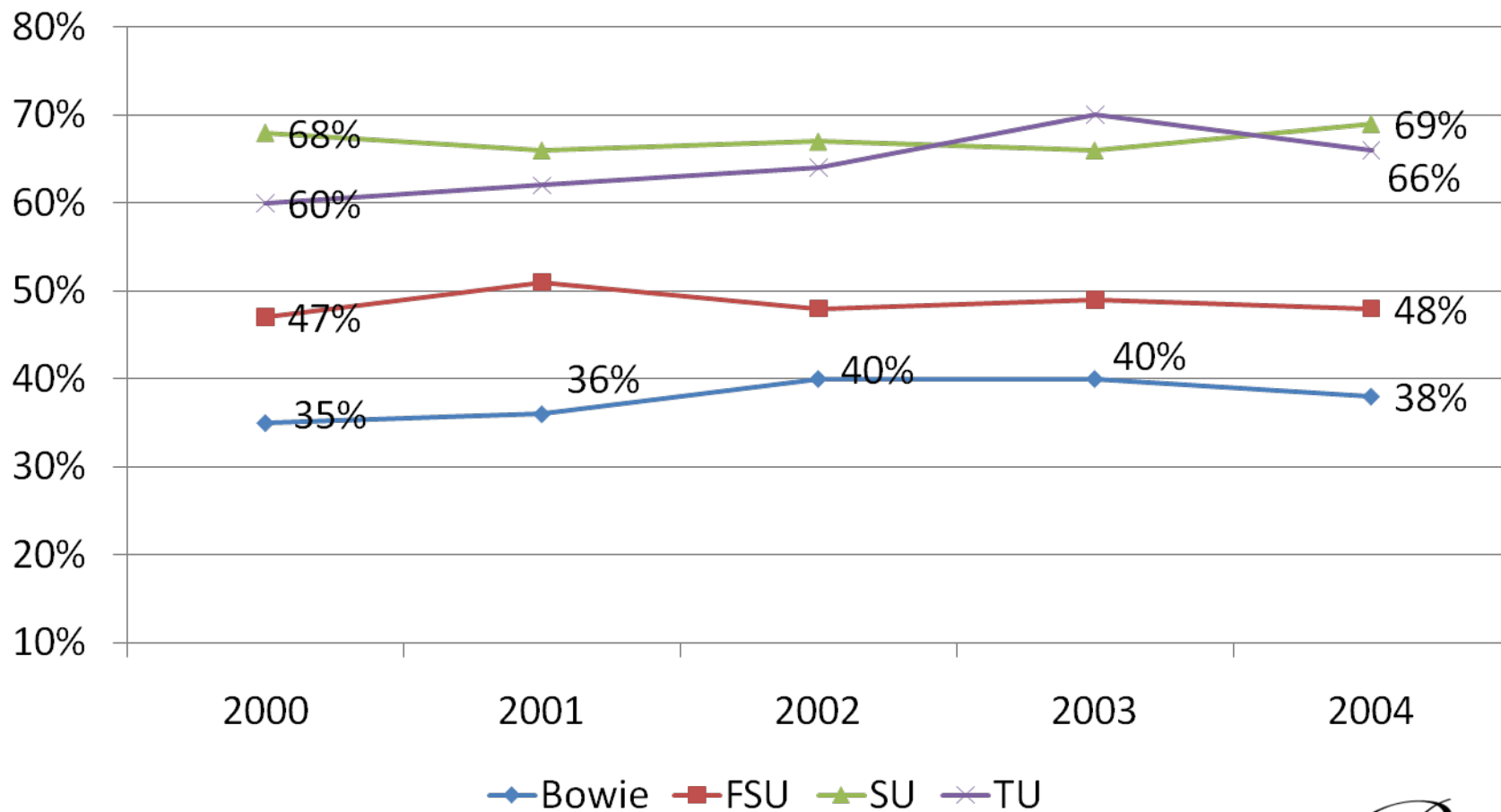
- Retention and Graduation Rates are measured in 3 different ways:
  - Within BSU
  - Within USM
  - Within Maryland

Cohort	Size	Bowie State University							Any USM School						
		Retention			Graduation			Enrollment	Retention			Graduation			Enrollment
		Year 2	Year 3	Year 4	Year 4	Year 5	Year 6	Year 7	Year 2	Year 3	Year 4	Year 4	Year 5	Year 6	Year 7
2000	361	73%	61%	52%	12%	28%	35%	7%	75%	66%	57%	12%	29%	38%	11%
2001	594	75%	58%	52%	14%	28%	36%	7%	77%	64%	58%	14%	30%	38%	11%
2002	566	70%	60%	55%	17%	35%	40%	6%	73%	64%	61%	18%	37%	43%	8%
2003	762	73%	60%	51%	13%	32%	40%	4%	76%	65%	56%	14%	34%	42%	6%
2004	627	77%	60%	53%	15%	31%	38%	9%	78%	65%	58%	15%	32%	40%	11%
2005	923	71%	56%	45%	22%	35%			74%	60%	50%	23%	37%		
2006	765	71%	54%	49%	11%				72%	58%	52%	11%			
2007	820	69%	57%	47%					72%	60%	53%				
2008	664	69%	54%						70%	59%					
2009	635	71%							72%						

# Six-Year Graduation Rates of HBI's in Maryland



# Six-Year Graduation Rates of Comprehensive TWI's in USM



# Closing the Achievement Gap

- Reported to USM, November 2011

**Trend Data**  
Six-Year Graduation Rates:  
Gap Student Group vs. Student Group Comparator

	Fall												
	1993	1994	1995	1996	1997	1998	1999	2000	2001	2002	2003	2004	
<b>African-American First-Time, Full-Time, Degree-Seeking Students</b>													
Cohort size	264	383	435	301	357	418	343	361	594	566	762	627	
6-Year Graduation Rate	36%	41%	39%	38%	38%	36%	38%	37%	37%	41%	39%	38%	*
<b>All USM First-Time, Full-Time, Degree-Seeking Students</b>													
Cohort size	8,263	8,797	9,226	9,615	10,040	10,589	10,521	10,766	11,796	11,421	11,518	11,736	
6-Year Graduation Rate	54%	56%	57%	58%	61%	62%	61%	60%	61%	62%	62%	62%	*
<b>The Gap</b>	18%	15%	18%	20%	23%	26%	23%	23%	24%	21%	23%	24%	

\*Preliminary

Note: Graduation Rates are for institution of first-time entry.

Source: IPEDS DataCenter, BSU GRS reports and USM Retention and Graduation Reports