



////////////////////////////////////

BOWIE STATE UNIVERSITY
ANNUAL REPORT

2011-2012



BOWIE STATE UNIVERSITY
ANNUAL REPORT

2011-2012



President's Letter

As I look back over the 2011-12 academic year, I am very pleased to note the amazing accomplishments of the faculty, staff and students of Bowie State University. The activities captured in this Annual Report are exemplary highlights that reflect the broad commitment to excellence that is spreading throughout the university.

As you read the following pages you will see repeated examples of transformation, innovation and leadership. The completion of the Fine and Performing Arts Center provided a new home for the University's arts education programs and a new arts venue for the region. The opening of the new Bowie Business Innovation Center welcomed entrepreneurs to the campus, positioning Bowie State in the forefront of regional economic development.

Students in varied disciplines pursued academic experiences beyond the campus with expanded international study and research opportunities, and faculty implemented new teaching strategies in the classroom to enhance student success.

We are especially grateful to our alumni and friends for their growing support of the university, particularly for grants and scholarships. It is a critical element in our efforts to provide the needed resources to limit financial hardship as a barrier to graduation for our students.

I hope that you will enjoy reading this Annual Report and learning more about our accomplishments of the past year.

Sincerely,

President



2011 - 2012
BOWIE STATE
AT A GLANCE

RANKED IN
TOP 20%

ON FORBES'
"2011 AMERICA'S TOP
COLLEGES" LIST

ENROLLMENT
5,236
UNDERGRADUATE: 4,150
GRADUATE: 1,086

ACADEMIC PROGRAMS
58
23 UNDERGRADUATE
35 GRADUATE

STUDENTS REPRESENT
27
STATES PLUS
U.S. VIRGIN ISLANDS
18 FOREIGN COUNTRIES

DEGREES CONFERRED
981
UNDERGRADUATE: 688
MASTER'S: 284
DOCTORATE: 9

Contents

pg. 1 **President's Letter**

CHANGING LANDSCAPES

Fine and Performing Arts Center Opens
New Student Center on the Horizon

pg. 5

ADVANCEMENTS IN ACADEMICS

Virtual Reality Meets the Real World
Course Transformation Improves Student Success

pg. 9

GLOBAL VIEW

Opening Global Enterprise Opportunities
Training Tomorrow's Intelligence Professionals
Unearthing the Life-Saving Potential of Biomedicines
Exploring New Exchange Programs in China

pg. 13

EXPANDING PARTNERSHIPS

Business Incubator Comes to Campus
Expanded Research Opportunities Through EPA Partnership

pg. 17

BECOMING A RESEARCH HUB

Unlocking Student Achievement through Animation
Bringing Social Media into the Classroom

pg. 19

pg. 21 **Impact of Expertise**

STUDENTS IN ACTION

Empowering Students to Succeed with Hill Harper
Promoting Peaceful Community through Conflict Resolution
New Resource Center Serves LGBT Students

pg. 23

pg. 25 **Athletic Standouts**

SPIRIT OF PHILANTHROPY

Take-a-Seat Supports the Arts
Endowment Matches Add Up
Donors Fund New Look for Symphony of Soul

pg. 27

pg. 29 **Donor List**

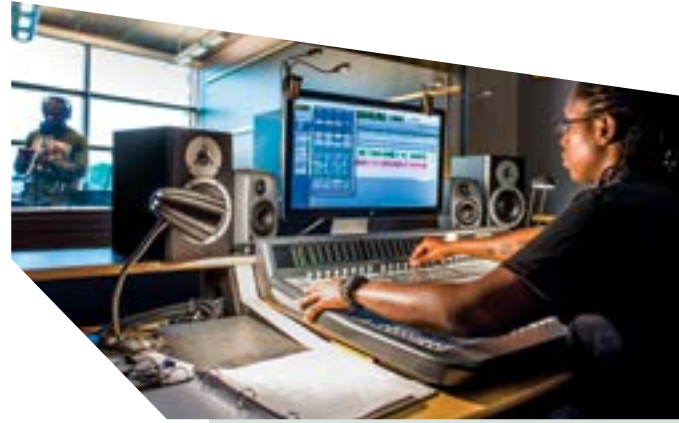
pg. 39 **Financials**

pg. 40 **Administration**





Intimate 400-seat Main Stage theater



State-of-the-art recording studio

Fine and Performing Arts Center Opens

The arts took center stage at Bowie State University with the opening of the new \$71 million Fine and Performing Arts Center that expands opportunities for arts education and world-class productions.



Green screen room in editing suite



The performance spaces, including two theaters and a recital hall, rival many of the professional venues in the Washington, D.C. region.

PHOTOS BY: DARREN HIGGINS

Students and faculty in art, music and theatre programs claimed the stunningly beautiful building as their new home in January 2012. The elegantly appointed 123,000 square-foot facility features specialized teaching and performance spaces with acoustically isolated zones that enable simultaneous performances and classroom activities. With special features customized for each discipline, students and faculty are excited to have a platform at Bowie State to hone their skills in ways never before possible.


The performance spaces, including two theaters and a recital hall, rival many of the professional venues in the Washington, D.C. region. The facility's status as an all-Steinway venue adds another signature distinction with 10 baby grand pianos and 23 practice pianos all bearing this prestigious mark of quality.

Specialized academic facilities in the center take arts education to a new level, enabling students to explore emerging careers at the intersection of art and technology.

A professional recording studio and the latest equipment for graphic design, animation and multi-media production empower students to develop new and exciting creations that integrate screen, stage and canvas.



Recital Hall with superior acoustics


The facility will also become a resource to expand community access to the arts, attracting patrons from Prince George's County and the greater Washington region. 



New Student Center on the Horizon

Students eagerly await the completion of a great new space to congregate, socialize and organize the numerous activities that shape the essence of life on campus. Rising behind the existing Wiseman Student Centre, the new \$42 million student center is destined to substantially enhance the quality of the campus experience.

Construction began in March 2012 and has already started to reshape the campus landscape. Slated for completion by August 2013, the new building will provide residential and commuting students with new facilities for recreational activities and a range of services and merchandising venues. The center will include an expanded game room, a new bookstore and diverse eating options. It will also include offices for student life, student government, and meeting rooms.

In keeping with the university's commitment to sustainability, the center is designed to conform to stringent environmental criteria and is expected to receive Leadership in Energy and Environmental Design (LEED) Gold certification, a well-respected, voluntary third-party verification of green buildings that demonstrates environmental stewardship and social responsibility. 



Virtual Reality Meets the Real World

When Bowie State computer science students strap on 3-D goggles and grab a controller, they're not settling in for a round of the latest video game. They're gearing up to simulate lifesaving scenarios in a new virtual reality laboratory developed with a \$300,000 grant from the National Science Foundation.

Students working in the lab developed virtual environments to evaluate plans for emergency evacuation of airports, airplanes and large buildings to enhance national security and preparedness to respond in emergency situations.

Under the direction of Professor Sharad Sharma, the laboratory provides a virtual platform for undergraduate and graduate students to assess human behavior in emergency response situations. It's a phenomenal resource for teaching and research, involving students in active research projects and critical thinking challenges.

Using a flat 2-D floor plan, they can create a near exact replica of any building or vehicle with the lab's 3-D modeling software. Drs. Sharma and Quincy Brown expanded the evacuation research agenda with two additional grants from the Department of Homeland Security for \$249,901 and \$200,000, respectively.

In addition to evacuation studies, the lab is also being used to study traffic intersections and airport runway safety. New graduate level courses are also being designed to prepare students for careers in national security and information technology. •



Course Transformation Improves Student Success

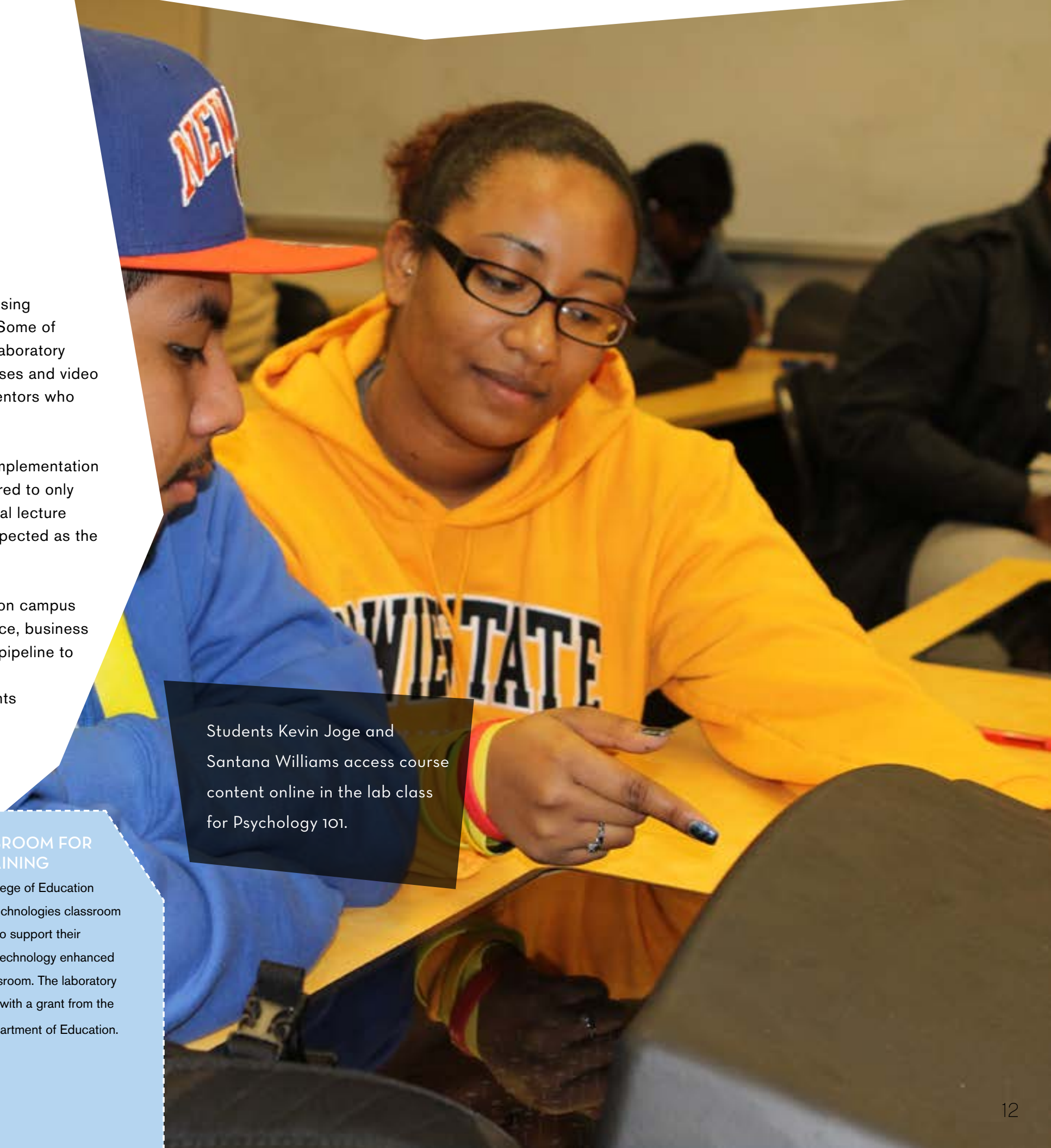
Psychology 101 took on a new look in 2011 as part of a growing effort to improve the effectiveness of teaching and learning for students who have grown up in the digital age. After a comprehensive course redesign, new digital interactive techniques supplemented professors' lectures, and students are enjoying greater success in the class.

Psychology faculty, led by department chair Dr. Cheryl Blackman, were the first at Bowie State to take on a redesign project as part of the University System of Maryland initiative to enhance the effectiveness and efficiency of teaching at institutions across the state. The project, with Dr. Katrina Kardiasmenos as principal investigator, received a \$20,000 USM grant to aid BSU in continuing its focus to improve required gateway courses taken by large numbers of students. More than 320 students from various majors take general psychology each semester.

The redesigned psychology course emphasizes active learning and increasing students' mastery of course content. Some of the in-class lectures are replaced by laboratory sessions with online interactive exercises and video reviews, as well as peer tutors and mentors who provide immediate feedback.

Students in the first semester of full implementation saw a pass rate of 68 percent compared to only a 62 percent pass rate in the traditional lecture class. Even greater improvement is expected as the techniques are refined.

Earlier efforts had also been initiated on campus to improve courses in computer science, business and nursing. More projects are in the pipeline to continue innovations in the classroom that enhance learning and help students stay on track to graduation. •



Students Kevin Joge and Santana Williams access course content online in the lab class for Psychology 101.

POSITIVE ACCREDITATION REVIEW

The Middle State Commission on Colleges and Universities reaffirmed Bowie State's accreditation in 2011 for another nine years, after an extensive self-study and review process. The review board cited that the University had made significant progress in establishing sound financial business practices that align with auditing standards and had developed a comprehensive Enrollment Management Plan.

COMPUTER SCIENCE DOCTORATE AWARDED

The doctoral program in computer science, established in 2007 saw its first graduate in May 2012. Lubomir Riha became the first Doctor of Science in Applied Computer Science to earn a degree from Bowie State University. He is currently a research scientist at George Washington University conducting research in the area of High Performance Computing.

SMART CLASSROOM FOR TEACHER TRAINING

Students in the College of Education have a new smart technologies classroom specially designed to support their training to develop technology enhanced lessons for the classroom. The laboratory was made possible with a grant from the Maryland State Department of Education.

Opening Global Enterprise Opportunities

Ethiopia's rich culture and history, along with its role in the development of African business and leadership, was the setting of a 12-day study abroad program for Bowie State business students. The second cohort to participate in the International Business Initiative program, the 10 students set out to build bridges of global engagement through enterprise and trade.

They met with top leaders from the African Union and United Nations Economic Commission for Africa to discuss ways to improve trade between Africa and the United States. The conversations focused on how African-Americans and Americans in general can become strategic partners in Africa's development. They visited successful companies to observe innovative business practices in industries such as textile, sugar and coffee.

The program, led by Drs. Fiseha Eshete and Granville Sawyer from the College of Business, was funded by a U.S. Department of Education grant. It reflects a continued focus to integrate international business concepts into the curriculum, preparing future leaders for opportunities abroad.

An additional outgrowth of the initiative was the development of a new foreign language course in Amharic, the official language of Ethiopia. The course was offered for the first time as a humanities elective in the Department of English and Modern Languages in fall 2011. ●



Training Tomorrow's Intelligence Professionals

Intelligence professionals of the future need a strong understanding of intercultural relations. Five students got a head start on this training when they traveled to India with a cohort of students from other historically black institutions in summer 2012. They were participants in an eight-week program to help them sharpen their skills in cultural studies and research.

The students from criminal justice, public administration and organizational communications programs immersed themselves in the culture by living with local families and taking language classes in Hindi. Trips to the Taj Mahal in Agra and to the Amer Fort in Jaipur to ride astride elephants and camels provided once-in-a-lifetime memories.

Organizational communications master's student Deidre Mathis learned a lot about the culture from

celebrating the birthdays of her host family's children and socializing at a local country club serving traditional Indian dishes. Mathis, along with the other students, documented their studies in research reports on the connections between science, technology, and communication in modern India, among other topics, preparing them for careers in national security or intelligence-related fields.

The program is part of a national effort to educate more students in security studies and to better understand Southeast Asian societies. It was developed through a five-year, \$1.8 million grant from the Office of the Director of National Intelligence, establishing the Mid-Atlantic Consortium – Center of Academic Excellence. Bowie State's Judith Fitzgerald, along with faculty from three Historically Black Institution partners, are leading the way in providing research and cultural immersion activities to train students to enter the intelligence workforce. ●

PHOTO PROVIDED BY: DEIDRE MATHIS



Unearthing the Life-Saving Potential of Biomedicines

Biomedicines developed from the study of plants can create life-saving medical breakthroughs and improve our quality of life. Biology students Meryl Collins, Ghislain Tchomobe, and Charles Waller made their mark on the field when they conducted biomedical research during an internship in the Dominican Republic in summer 2012.

Collins' research allowed her to explore how certain plants can be used to destroy cancer or stop cancer cells from dividing. The impact of her work could allow for the further development of natural treatments to replace or supplement man-made drugs. She also tested the plants' uses as natural pesticides, as well as antifungal and antibacterial agents.

Assistant professor Anne Osano in the Department of Natural Sciences led the students' research in collaboration with scientists at Cornell University. The students continued their projects in Dr. Osano's lab and presented their findings at the Annual Biomedical Research Conference for Minority Students in San Jose, Calif., where Collins took home two awards for her poster presentation. ●



PARTNERSHIPS IN BIOTECHNOLOGY

Dr. George Ude, associate professor in the Department of Natural Sciences, lent his expertise in biotechnology research to two universities in Nigeria to train students and faculty in DNA extraction, gene cloning, and the production of genetically modified organisms. He has developed ongoing partnerships with Godfrey Okoye University and Joseph Ayo Babalola University to support them in developing biotechnology programs and laboratories.

MAKING STRIDES AGAINST HIV/AIDS

Dr. Rita Wutoh, Wellness Center director, conducted training in HIV/AIDS treatment and prevention for faculty and students at the University of Addis Ababa in Ethiopia – a country with one of the world's largest HIV-infected populations. The faculty exchange program was sponsored by the Twinning Center American International Health Alliance, an organization focused on addressing the global HIV/AIDS epidemic.

Exploring New Exchange Programs in China

President Mickey L. Burnim continued his efforts to promote new opportunities for students and faculty to participate in international experiences and study when he traveled to Beijing with representatives from the American Association for State Colleges and Universities.

Dr. Burnim met with other higher education leaders to explore ways to partner with Chinese higher education institutions to facilitate international study abroad opportunities for Bowie State students and faculty, as well as opportunities for Chinese students to study at Bowie State.

The trip supported BSU's goal to expand inter-institutional study abroad, academic exchanges, and research opportunities that enhance students' global perspectives. ●





Business Incubator Comes to Campus

Small businesses are critical to expanding economic development in Prince George's County, and Bowie State University took a lead role in furthering the county's efforts. In January 2012, the Bowie Business Innovation Center (BBIC) opened its doors on the first floor of the Center for Business and Graduate Studies, making Bowie State Maryland's first historically black institution to host a business incubator focused on fostering small business growth.

In partnership with the City of Bowie, the BBIC provides a home for fledgling businesses with office space, equipment and receptionist services. The entrepreneurs receive coaching, mentoring and business plan support to nurture their development into strong companies that can provide jobs and energize the local economy.

The center adds a new dimension to the entrepreneurial spirit on campus. Bowie State business faculty members provide added expertise to assist the center's clients with market research and business development strategies, among other things. For students, it's an opportunity for hands-on internships where they can get an inside view of what it takes to start a new business. And with a Bowie State alumna, Magdalena Gebrekristos, as one of the first affiliate clients at the center, they already have an inspiring role model to follow. ●



Expanded Research Opportunities Through EPA Partnership

Opening doors to job opportunities for students and creating avenues for new research endeavors for Bowie State faculty are the focus of an extended partnership with the Environmental Protection Agency. A five-year extension of a partnership first established with the College of Business in 2009 was solidified in 2012 and expanded to include the College of Arts and Sciences.

Under the new agreement BSU and the EPA are collaborating to enhance faculty and student participation in research projects with EPA scientists and to increase student access to internships and future employment at the federal agency. More than 20 students are engaged in active mentorships with EPA staff – four have participated in formal internships.

The development of an environmental science curriculum and community outreach programs are also on the horizon as future outgrowths of the partnership. ●



NURSING PROGRAM IN SOUTHERN MARYLAND

The Master of Science in nursing program was authorized to offer its family nurse practitioner concentration at the Southern Maryland Higher Education Center, bringing expanded career advancement opportunities to the Eastern Shore. The first students enrolled in fall 2012.

PROJECT MANAGEMENT PROGRAM RECOGNIZED

The Project Management Graduate Certificate Program was recognized as a registered education provider by the Project Management Institute, an international organization that sets global standards for project management programs.

Unlocking Student Achievement Through Animation

Imagine a student working with an animated professor on a computer, that provides individualized tutoring in areas where the student needs the most help. That's the vision of Dr. Jie Yan, associate professor in the Department of Computer Science, a respected researcher in the field of artificial intelligence.

She has worked with three Bowie State students to develop this technology and increase its effectiveness, publishing the research in science journals and presenting it at conferences. Their work focuses on creating a more life-like computer character with accurate visual speech and realistic expressive head and face movements. The goal is to develop a virtual tutor that would more effectively engage students in the learning process. It would present science concepts through narrated animation and question-and-answer interactions, ultimately leading to higher student achievement rates.

The research has the potential to revolutionize computer-based distance learning and tutoring programs in a variety of disciplines by supplementing professors' lectures with virtual characters who are responsive to the needs of their students. ●



Bringing Social Media into the Classroom

How can professors use social media like Facebook, Twitter and YouTube as tools to reinforce what they teach their students?

That was some of the discussion taking place among about 60 scholars, professionals and students at the first annual Social Media Technology Conference and Workshop hosted at Bowie State, in collaboration with Howard University. Embracing social media in the classroom can aid professors in facilitating productive interaction among students and supplement course materials to increase learning.

Communications researchers also debated how to collect data from people using Twitter and Facebook and how to protect themselves and their institutions from legal challenges associated with the use of social media.

Drs. Pamela O'Brien and Kehbama Langmia, BSU associate professors of communications, partnered with communications faculty from Howard University to develop the conference with an aim of creating a forum on how to effectively use social media in the classroom. ●



ASSESSING IMPACT OF GAMING
 As Maryland citizens considered expanding gaming operations in the state, they were aided by an economic impact study conducted by Associate Professor of Economics LaTanya Brown-Robertson for Penn National Gaming, Inc., owners of Rosecroft Raceway in Prince George's County. Her research found that a full-fledged casino at the track would add about \$2.5 million to the Maryland economy during construction and the first five years of operation.

PLAY EARNS NOTED ACCLAIM
Whales, a play written by Assistant Professor of Theatre Bob Bartlett, a noted playwright and director, was runner-up for the 2011 David Mark Cohen National Playwriting Award and the Mark Twain Prize for Comic Playwriting.

EXAMINING TECHNOLOGY'S INFLUENCE
 For the second straight year, Bowie State hosted about 50 scholars from around the world at the Humanities and Technology Association Conference. Chaired by Assistant Professor of History George Sochan, the conference explored such topics as the implications of global technologies in Africa and the connection between Internet and politics.

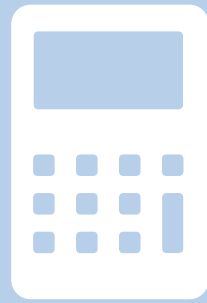
Faculty Take the Lead

The faculty at Bowie State University not only demonstrate their expertise in the classroom, but they also lend their skills and time to serve in leadership roles in professional and community organizations. Faculty leadership serves to strengthen the university's reputation as an institution of quality instruction and academic excellence.

Dr. George Sochan of the Department of History and Government was elected chair of the national Humanities and Technology Association.



Dr. Delois Maxwell of the Educational Leadership Department serves as a journal reviewer for the National Council of Professors of Educational Administration.



Dr. Fredrick Mills of the Department of History and Government was appointed editor of the Humanities and Technology Review.



Dr. Adrian Taylor of the Department of History and Government was appointed Franklin Fellow, U.S. Department of State, and Bureau of African Affairs.

The U.S. Department of State and U.S. Agency for International Development appointed faculty members from the Department of History and Government – Drs. Adrian Taylor, David L. Reed, Tamara Brown, Dennis Rogers and Sammye Miller – to its Foreign Service Selection Board for the 2011-12 year.



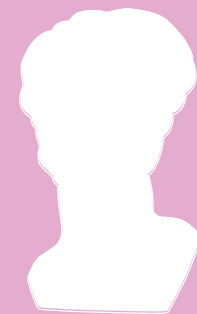
Dr. Annie Ruth Leslie of the Department of Behavioral Sciences and Human Services was appointed to the U.S. Commission for Post-Secondary Education by Secretary of Education Arne Duncan.



Dr. Alan Anderson of the Department of Natural Sciences was elected secretary for the Chemical Society of Washington.



Associate Professor Tewodross Melchishua, coordinator of the visual communications and digital media arts program, was appointed to the Prince George's County School System's academic advisory board for its Graphic Design, Media & Communications Academy. The Prince George's County Council also appointed him to the county's Art in Public Places committee to help acquire and install artworks in public buildings.



Dr. Andre P. Stevenson, chair of the Department of Social Work, was elected to a three-year term on the national board of the Association for Baccalaureate Program Directors.

Dr. Cubie Bragg, assistant professor in the Counseling Department, was named to the Prince George's County Public School's Head Start Mental Health Program Advisory Board.

Dr. Kimberly Daniel, assistant professor in the Counseling Department and coordinator of the school psychology program, was appointed to the board of the Maryland School Psychologists' Association.



Empowering Students to Succeed with Hill Harper

Award-winning actor and bestselling author Hill Harper delivered a powerful message to students about becoming the architects of their own lives and charting their courses for the future during a 2011 Black History Month presentation.

He spoke words of wisdom from his latest book, *The Wealth Cure*, to challenge the idea of a successful life being one with financial riches. He encouraged students to fight past their fears to achieve success in their lives. He also answered questions from students about all four of his books.

Harper's visit was part of an effort by the Student Government Association to introduce students to contemporary authors and provide a platform for discussion of their works. ⑥

Promoting Peaceful Community Through Conflict Resolution

Building a peaceful campus through conflict resolution united students, faculty and staff to take a stand against violence during Peace Week 2012. Students encouraged thoughtful reflections about how to reduce violence on college campuses and how they could make Bowie State a more peaceful community. With recent violent, high-profile incidents occurring on campuses and in communities around the country, Peace Week took on a special meaning.

Students, faculty and staff donned hoodies during the annual Peace Walk around the campus. Spoken word artists expressed themselves at a poetry night, and students attending panel discussions engaged in fruitful conversations on overcoming conflict and social media's impact on escalating conflict.

Peace Week culminated with Bowie State hosting the 25th Annual Student Conference of the Capital Area Association for Peace Studies, which promotes cooperation between peace studies programs across the region. ⑥



New Resource Center Serves Lesbian, Gay, Transgender Students

Bowie State University made history in 2012 when it opened the doors to a new resource center dedicated to serving the needs of gay, lesbian, bisexual and transgender students, becoming the first public Historically Black Institution to provide such a center.

The new Lesbian, Gay, Bisexual, Transgender, Queer, Intersex and Allies (LGBTQIA) Resource Center provides information, counseling, a library of educational materials, and a student meeting space for LGBT students. The center's goal is to educate Bowie State students, faculty and staff about issues related to sexual orientation and provide a supportive, welcoming environment for LGBT students and allies. ⑥

AWARD-WINNING STUDENT RESEARCH

BSU students' research and presentation skills were recognized at the 2011 Emerging Researchers National Conference in STEM. Ruth Agada, a candidate for the Doctor of Science in Applied Computer Science, took first place in the oral presentation category, and Aaron Booth, an undergraduate computer science student, won second place in the oral presentation.

TEACHER FELLOWS SELECTED FOR TRAINING

Education major Tia Johnson and communications major Kendall Robinson were selected as fellows for the Teacher Quality Retention Program for students interested in pursuing teaching as a profession. Sponsored by the Thurgood Marshall College Fund, the TQRP provides intensive training sessions in effective instructional methods over two summers and covers the cost of the PRAXIS licensing examination.

FIRST CAMPUS HEALTH AMBASSADOR NAMED

Deidre Mathis, a master's student in organizational communications, was selected to be the first student ambassador for the Thurgood Marshall College Fund/Center for Disease Control program. TMCF/CDC Student Ambassadors promote public service and public health on their campuses and in the community.

Academics First For Athletes

The Bowie State University Athletics Department focuses on the “student” in student-athlete. For the 2011-12 academic year 45 athletes earned their degrees, and the department registered a 69 percent six-year graduation rate.

Individually, student-athletes excelled at the highest levels academically. Mariela Hernandez, a junior biology major and pitcher for the Lady Bulldogs softball team, was recognized with the Division II Athletic Directors Association Academic Achievement Award. The award requires students to have a cumulative GPA of 3.5 or higher and be an active member of an intercollegiate team.

The 2012 Central Intercollegiate Athletic Association (CIAA) Rookie of the Year in softball, Cassandra Clayborne maintained a perfect 4.0 cumulative grade point average in the 2011-2012 academic year as a biology major. She was also named a member of the 2012 CIAA Commissioner’s All-Academic Second Team and the All-CIAA First Team. Also named to the 2012 CIAA Commissioner’s All-Academic Team were sophomore catcher Adria Lewis from the women’s softball team and junior forward Byron Westmorland from the men’s basketball team.

MEN’S BASKETBALL TEAM NAMED DIVISION CHAMPION

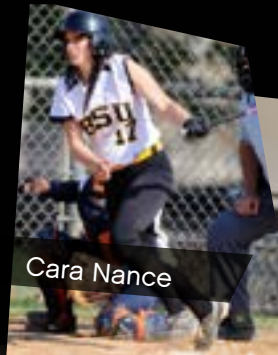
The men’s basketball team became the CIAA Northern Division Champion and advanced to the semifinals in the CIAA Tournament before losing to Elizabeth City State University, ending the season with a 22-6 record.

STUDENT-ATHLETES EARN CIAA HONORS

Senior guard and team captain Darren Clark and junior forward Byron Westmorland were named to the CIAA All-Tournament Team. On the women’s side, senior forward Juliette Turner was named to the CIAA All-Tournament Team. Cara Nance was named CIAA Player of the Year in Softball.

JOHNSON GOES TO THE NFL

Former Bowie State University linebacker, Delano Johnson, signed a free agent contract with the NFL’s Houston Texans. As a Bulldog, he racked up 219 total tackles and set school records in 2010 with seven blocked kicks/punts for a season and 11 career blocked kicks/punts.



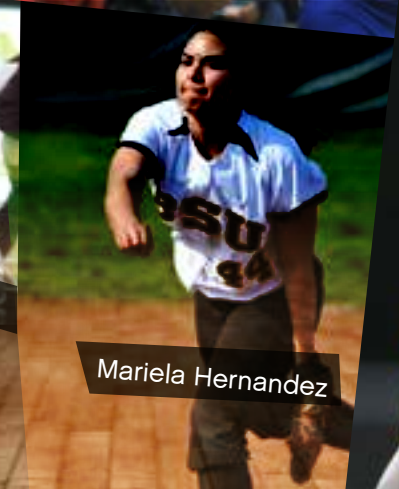
Cara Nance



Juliette Turner



Darren Clark



Mariela Hernandez



Byron Westmorland



Cassandra Clayborne



Delano Johnson

Take-a-Seat Supports the Arts

As the new Fine and Performing Arts Center neared completion, alumni sisters Barbara Bush, Diane Wilson-Bragg and B. Yvonne Wilson could hardly contain their excitement. As long-time supporters of the arts and the university, they were looking forward to having world-class performance venues at their alma mater.

But the life of the center comes from the programs it produces. Anxious to make that happen, the sisters were amongst the first donors to contribute to the Take-a-Seat campaign that specifically supports the operations of the center.

Seats in the main stage theatre and the recital hall can be dedicated in honor or memory of an individual, family or organization. The campaign began in fall 2011 and raised more than \$30,000 in its inaugural year. ●



Six-time Grammy Award nominee and jazz vocalist Nnenna Freelon performed at a concert to benefit Bowie State's \$15 million campaign and support student scholarships. Freelon performed jazz standards with her characteristic flair before an audience at the Music Center at Strathmore. ●

ANNUAL FUND SUPPORT INCREASES

Alumni donors increased by 31 percent over the previous year, and the number of donors giving \$1,000 or more doubled the membership of the 1865 Society. The recently established Enrollment and Retention Emergency Fund helped 200 students who were on the verge of leaving school for financial reasons.

BSU FOUNDATION FUNDS SCHOLARSHIP NEEDS

The BSU Foundation provided more than \$243,000 in scholarship funds that were awarded 200 BSU students, recognizing their continuing commitment to academic excellence.



I felt inspired to donate to the annual fund because as a student and employee of Bowie State University, I take ownership in BSU! I believe that the more the student body and alumni donate to the school, the more we will begin to take ownership to do our part to assure BSU receives the same funding and support as other state institutions. Bowie State is not just another institution, but our second home. ”



Julius Nyerere
First-time Donor
Junior, History and Government

Endowment Matches Add Up

The story of endowments at Bowie State University is one of shared commitments and effective leveraging of matching dollars. The university's endowment saw a \$475,000 growth in fiscal 2012 spurred by \$311,000 in matching funds from the state's Private Donor Incentive Program (PDIP), which promotes private giving to Maryland's public colleges and universities.

The Dr. Charles A. Stokes Memorial Endowment Fund, established in 2007 with a gift of \$500, has far exceeded its initial \$10,000 goal. Through the ongoing efforts of his daughter, Kimberly A. Stokes, a BSU Foundation Board member, and several matching programs, the fund reached \$80,000 this year.

Similarly, PDIP matching funds increased the William R. Teal Jr. Endowed Fund to \$400,000 and the Edward A. St. John Endowed Scholarship Fund to \$250,000. These funds yield significant dollars annually for student scholarships without invading the principle balances. ●

Donors Fund New Look for Symphony of Soul



When the Symphony of Soul Marching Band takes to the field for the 2013 football season, they will be high stepping in new uniforms, exemplifying what can happen when a group of committed believers work together to achieve a goal.

When alumni and friends learned that the band's 13-year-old uniforms were coming apart at the seams, Bulldog pride spurred them to action. A targeted fundraising campaign was launched in winter 2012 to secure enough funding to enable the University to move forward with the purchase of 250 new uniforms to outfit the expanding band. The effort brought together alumni and friends with a commitment to the student experience and a love of the arts.

Led by Monie Broadus who had worked for the University for 12 years, the annual giving campaign attracted donors who wanted to make a tangible contribution and quickly see the results of their giving. More than \$40,000 was raised in a short four months, with lead gifts of \$10,000 each from the Class of 1962 for their 50-year reunion and from Toyota Financial Services, a new corporate partner. The Dorothy L. Height Educational Foundation, supported by former U.S. Secretary of Labor, the Honorable Alexis Herman, also sponsored a special event and additional gifts of \$10,000 were committed to support the project.

Newly outfitted from head to toe, members of the SOS Band will look as good as they sound. ●

Leadership Circle (\$25,000+)

CIAA
Edward St. John Foundation, Inc.
Radio One, Inc.
Thurgood Marshall Scholarship Program

Heritage Circle (\$10,000 - \$24,999)

Aerotek
B&W Solutions, Inc
Combined Federal Campaign
Daly Computers, Inc.
G. S. Proctor and Associates Inc.
Hattie M. Strong Foundation
Hilex Poly Co., LLC
Maryland Charity Campaign
State Farm Mutual
Toyota Motor Sales U.S.A., Inc.

Goodloe Circle (\$5,000 - \$9,999)

Allmond & Company LLC
BSU National Alumni Association
GEICO Corporation
Helena Foundation, Inc.
Northrop Grumman Corporation

Giles Bragg & Diane Wilson-Bragg
Mickey & Lavera Burnim
Kimberly Ann Stokes

Cornerstone Circle (\$2,500 - 4,999)

70/80's Alumni Group
Blacks in Government Pentagon Chapter
Cosmos Air Purification
DeMatha Catholic High School
Epic Spirit Ventures, Inc.
First Baptist Church of Highland Park
Johnson & Johnson Family of Companies
Maryland Black Caucus Foundation, Inc.
Reznick Group, P. C.
Shiloh Baptist Church
T. Rowe Price Foundation, Inc.
TEK Systems

Joe Anonymous
Barbara Wilson Bush
Loretta Y. Fisher
Alexis M. Herman
Gail S. Medford
Alfonzo & Valorie Powell
Hassan Qaimmaqami
Salome Raheim
Joyce M. Sheppard
Robert & Pinkie Strother
Betty B. Turner

Founders Circle (\$1,000 - 2,499)

Association for the Study of African American Life & History
AXA Equitable Life Insurance Company
Boy Scouts of America
BSUNAA Montgomery County Chapter
Dorsey Educational Fund, Inc.
Extra Point Productions, Inc.
Federal Energy Regulatory Comm
Goodloe Memorial Unitarian Universalist Congregation
Grassroots Youth Football League, Inc.
HAZMED
Mid Atlantic Football Foundation
Pareto Energy, LTD
Supreme Landscaping
TBFOC, Inc.
Thompson Hospitality Corp.

Washington Gas Light Company
George Acquah
Michael M. Atkins
William E. Batson
Bernard & Monceny Broadus
Karl Bruce Brockenbrough
Fabio Chacon
Joyce & Leroy Cowan
Marvis Conley Donalson
Charles R. Dorsey
Jacquelyn D. Eubanks-Rudd

Gayle M. Fink
Melvin W. Gaskins, Jr.
Carlton & Doris Gillard
Calvin A. Gilliam
Anton E. & Wendy Goff
Mildred Ridgley Gray
Joseph Michael Green
James E. & Agnes Griffin
John P. Hammond
Melanie Bonita Kelly
Julian P. King
Clarence & Phyllis Knight, Jr.
H. Michael Krimbill
Morris A. Little

Irving & Shirley Long
Richard & Jennifer Lucas, Jr.
Loring Millin
John & Rosalind Muchiri
Raymond S. Peters
James & Elizabeth Proctor
Norman & Yolanda Pruitt
Henry J. & Queenie Raymond
Marian Rucker-Shamu
Khalid & Karen Shaheed
J. Sidney Sheppard
Cecily L. Starks

Craig L. Stevenson
Frederick Douglas Taylor, Jr.
William L. Timmons
Sherece Y. West
B. Yvonne Wilson
Louis Wilson
Lillian J. Wiseman

Educators Circle (\$500 - \$999)

7th District Constituent Fund
AMF Bowling Centers, Inc.
BSUNAA Baltimore Chapter
Enterprise RAC Company of Maryland, LLC
Flagstaff Industries Corporation
Morgan Stanley Smith Barney, LLC
Office of the Prince George's County Executive
Omega Psi Phi Fraternity
T. Rowe Price Program for Charitable Giving
Pepco Holdings Inc.

Marian L. Anderson
Florence V. Beaty
Earle N. Brashears
Delores Cole Brown
Yvonne P. Brown
Erwin Brown, Jr.
Arthur Thomas Brunson, III
Patricia Caldwell-Butler
Harmon L. Cooper
Marvin Burton Cornish, Jr.

Maitland W. Dade
Neal & Andrea Daniels
Eloise Dargan
Evera Dargan
Robert O. Davis
Ivan & Anna Dotson
Valerie W. Drake-Dargan
Thurmond T. Dunbar, Jr.
Geraldine A. Feaster
Anita D. Ford
Roberte Jennings Foster
Wanda E. Gill
Marguerite J. Hall
Eleanor Murden Harris
Marion & Herbert Simmons

Sheila M. Hobson
Tasha L. Holloway
Patricia M. Hughes
Jerry & Angela Isaac
Olivia Yvette Jenkins
Edna Young Johnson
Dennis Maurice Jones
Gordon & Joyce Sampson
James E. Lewis
Toyia Nash Lyda
Yvonne S. Marbray

Ricardo D. McCrary
Joan W. Oxendine
Joyce R. Phillip
James J. Quarles
Linda L. Roberts
Kenneth & Sandra Beckham
Barbara A. Scott-Johnson
Charles Sembly
Susan L. Shaffer
Lori Ann Smothers
Mishaun Stevenson
Darren M. Swain
Richard & Tammi Thomas
Zilpha P. Thomas
Artie L. Travis
Darren J. Washington
Barbara J. Williams
Brenda C. Williams
Michael D. Williams
Donald H. Wilson
Claretta Smith Wingo
Evelyn Wright

Scholars Circle (\$250 - \$499)

BSU Campus Based Alumni Chapter
Gaylord National Resort & Convention Center
National Scholastic Sports
National Sorority of Phi Delta Kappa
SAIC, Inc.
Anthony P. Bailey
Gerri Bates
Barbara J. Boney
William G. Bostic, Jr.
Elizabeth M. Broadway
Anissa L. Burley
Rivizil & Beverly Chandler
Carl Chevara
Irving W. Copeland, Jr.
Dionne Nicole Curbeam
Ramona E. V. Davis
Richard Faltz, Jr.
Norma Wilson Gary
Hoke Smith Glover, III
Bedelia Green
Keith A. Gruenberg
Andre Hill
Percy Alphonzo Hill
Lutisse R. Hinnant
Denise Howell
Gerald Uche Ikedilo
Betty Isom
Cynthia Jackson
Brenda R. James
Anthony J. Jefferson
Mona D. Johnson

Clarence Thomas Jones
Robert D. Mahoney
Veda Ann McCoy
Booker T. McManus
Shirley Corinne Moaney
Arthur Moore
Felita V. Moran
Shirley Robinson Morris
Yvonne O'Connor
Danielle C. Ompad
John M. Organ, Jr.
Alan Lloyd Pauls
Erma Tucker Price
Keith A. Prue
King David Range
Charles R. Ryan
Horace & Beatrice Smith
Roland B. Smith, Jr.
Barry S. Socks
John H. Starks
Janet L. Thomas
Josephine Wilson
Loretta Wood
Barbara Ann Woolford
Floyd Wright, Jr.

Donors Circle (\$100 - \$249)

AT&T Foundation
Behavioral & Social Research, NIA
BSUNAA Fred-Carroll Chapter
Chowan University
Gate Way To Change
ITE Inc.
Microsoft Matching Gifts Program
Nationwide Foundation
Nicholas Consulting
The Pfizer Foundation, Inc.
Byron Adams
Sherman L. Addison
Cruz E. Alexander
Angie M. Alston
Doshia Coyetta Ameer-Bey
Janet Anderson
Carolyn N. Armstrong
L. Nancy Armstrong
Henry T. Arrington
Sylvia Mitchell Askew
Reubin C. Atkins
Annette Y. Aulton
James Eric Bagley
Raiona D. Bailey
Abeke Baker
Arnold S. Ballard
Essie M. Banks
Mary R. Bannerman

Geraldine V. Barbour
Bessie N. Barkley-Morgan
Gerald Sylvester Barnes
Robert W. Barnes
Clarence Battle
Emma Linda Battle
Glorious Bazemore
Winell H. C. Belfonte
Joanne C. Benson
Sandra K. Benston
Nashira Monchel Betton
Bronda A. Blake-Newman
Clyde W. Bolts
Linwood Harvey Bowers
Theresa C. Braddock
Mary A. Bradford
Miriam Brathwaite
Roger L. Briscoe
Shirelle Briscoe
Daniel C. Brock
Judy Harris Brooks
Lorraine Brooks-Jennings
Lawanda Marie Brown
Norman Washington Brown
Peggy A. S. Brown
Weldon Brown, Jr.
Thelma J. Brown-Wallace
Michelle Bryant
Aurora T. Burke
Alphonso Robert Burns
Sandra Kendrick Burton
Duane A. Butler II
John Butler
Joseph N. Butler
Heather Byer
Maude L. Byrd
Karen Louise Campbell
Minnie P. Carmichael
Milton Carr
Wanda Carrington
Andree Y. Carroll
Octavia L. Carter
Leshia La'shay Charles
Peggy Elsey Chase
Kimberly A. Chavis
LiLi Chen
Henry A. Clements, III
Vincent R. Cleveland
Mirtis B. Coggins
Richard Colbert
Phillip L. Colbert, II
Aaron B. Coleman
Harvey Collier
Sandra E. Collins
Angela K. Contee-Borders



Joyce Patricia Conway
 James F. Cook
 Tonya Delicia Cooper
 Edith & William Cornish
 Wayne O. Cox
 Carolyn D. Crawley
 Barbara Ann Crosby
 Robert Leonard Cross
 Mary Jane Cupples
 Patsy Dorsey Dade
 John O. Dahunsi
 Thelma Thomas Daley
 Latrice Vernice Davis
 Sheila Lynn Davis
 Hatcher Abernather Day
 Mensah M. Dean
 Edward V. DeShields, Jr.
 Mamoudou Diane
 Augustus C. Dickens
 Davina Elizabeth Djangali
 Lark T. Dobson
 Aravind Doma
 Jennifer Anne Dorsey
 Tywana H. Dorsey
 William S. Dorsey
 Sheila Kay Draper
 Ronald Drummond
 Lawrence C. Dunston
 Deborah A. Eason
 Phyllis Terea Easter
 James A. Edelen
 Stanley R. Edwards
 Urman C. Edwards
 Virginia H. Eggleston
 Audrey El-Amin
 Sheila M. Eley
 Evin Latta Ellison
 Harvey L. Evans
 Barbara B. Fairfield
 Tamera Delores Farrar
 Norma A. Fields
 Diane Cowan Fingers
 Gloria A. Flood
 John & Gina Flynn
 Christine A. Foland
 Joyce A. Fourth-Clemons
 Mark P. Francis
 Lauretta Freeman
 Linda C. Funn
 Treasa Marie Gage
 Marva Annetta Gaither
 Purnell P. Gaither
 Margo Green Gale
 Ernest & Yvonne Galloway
 Doris Camp Gamble
 Christian Alexander Gant
 Barbara L. Garner-Hudak
 Terry J. Gay
 Victor Lamont Gibson
 R. Michael Gill
 Mahmoud M. Gimie
 Calvin & Ginny Lee
 Terry Glass
 Handy E. Gloster
 Ann E. Goode
 Julia L. Goodman-Gainey
 Doris A. Grant
 Janice M. Grant
 Arthur Graves
 Victor Laban Green
 Serena Westbrook Gregg
 Joel L. Gregory
 Virginia B. Guilford
 Austin E. Gumbs
 Dominique E. Hall
 Mary T. Handy
 Olympia B. Hankerson
 Jimmie Wayne Harrell
 Audrey S. Harris
 John Irving Harris, III
 Lance G. Hatcher
 Wilbert E. Hawkins, Jr.
 Pamela A. Hay
 McKinley M. Hayes
 Davida Haynes
 John Haysbert
 Ruth Jackson Henley
 Marc A. Henry
 Carla Reneel Henson
 Thomas Herndon
 Paul H. Hester
 Gloria Rebecca Hicks
 Shirley Ann Hicks
 Percy Hill
 Jerrod Lydell Hines
 Brian Mark Holland
 Nyere L. Hollingsworth
 Anna Mae O. Holmes
 Cassandra V. Holmes
 Keith Holmes
 Oliver Dale Holmes
 Shemayne Camille Hooks
 Benjamin Hosch
 Hsing-Hwa Hsiang
 Patsy S. Huff
 Marva Hull-Johnson
 Tramaine Elizabeth Hurts
 Rosie D. Hutchinson
 John H.S. Hyater, Jr.
 Garey Andrew Hyatt

Carol A. Hyman
 Dahlia Camille Hypolite-Sesay
 George H. Ingram, Sr.
 Hasani Adisa Isom
 Vatrice Jackson-Walker
 Harold L. James
 Samuel E. Jamison
 Brenda Joyce Jenkins
 Kenneth M. Jennings, Jr.
 Weidong Jin
 Audrey C. Johnson
 Corbin & Beatrice Johnson
 Estelle Owens Johnson
 Kellie Nicole Johnson
 Kevin Mark Johnson
 Margaret E. Johnson
 Marva Johnson
 Mary G. Johnson
 Michael Alan Johnson
 Ryan Alexander Johnson
 Aleveta S. Jones
 Elisha & Doretha Jones
 James R. G. Jones
 Rudell S.W. Jones
 Trellis Norvel Jones
 Theodore R. Jordan
 Henry & Juanita Pinkney
 Kelvinda Kamara
 Audrey K. King
 Eric King
 Lekeisha Nicole King
 Lynn I. King
 Nicol King
 Carlton Andre Kitchens, Sr.
 Clarence E. Knight, III
 Dinesh Chand Kolla
 Samuel Edward Kydd, Jr.
 James R. Lanier
 Lawrence Lawson
 Sonya R. Lee
 Tatia N. Leeks
 Linda C. Lineweaver
 Loilette H. Loderick
 Bonnie D. Logan
 Chevonie A. Logan
 Weltha J. Logan
 Darrin Wali Long
 Diana D. Lord
 Evelyn Estep Love

Qingsheng Luo
 D. Michael Lyles
 James & Haweda Mable
 Carolyn S. Mackey
 Melissa Lynette Major
 Jacqueline Renee Marshall
 Martine Kent Martin
 Virgil O. Martin
 Donna F. C. Mason
 Walter Aloysius Mason, Jr.
 Eugene W. Matthews
 Catherine Lucas Maupins
 Gloria Yongue McClure
 Terita Antoinette McCoy
 Alonda Shantel McDuffie
 Dorothy Ann McGinness
 Robert & Carolyn McGlotten, Jr.
 Shon Derrell McLean
 Judith A. McMillan
 Sheena L. McReynolds
 Bobette S. Meads
 Judy Rokosz Merring
 Cheryl A. Mickel
 Gloria Miller
 Robert Albert Miller
 Cynthia Mills
 Jamal K. Mitchell
 Kevin F. Montgomery
 Jeanette Smith Moody
 Constancia Lisa Moreno
 Deidre Y. Morgan
 Andrea E. Morris
 Lonnie Morris
 Velmar Polk Morris
 Oreal D. Morsell
 Roberta A. Moseley
 Carolyn S. Moye
 Frank E. Norton, Jr.
 Pamela O. O'Brien
 Arthur O'Connor
 Olusegun Abayomi Odukoya
 Abdulwahab O. Odunuga
 Vincent Ogida
 Anderline E. Okala
 Adedayo Temitope Omobo
 Tiana Adair Ositelu
 Stephanie Overton
 Gregory O. Page
 Dharma Pala

Lula J. Parran
 Edith Mariela Parris
 Ralph L. Parris
 Charlene M. Passmore
 Marion T. Patterson
 Julia A. Paul
 Beatrice P. Payne
 Shannon Dionne Perkins
 Samuel Perminter
 Jerry J. Perrizo
 Joe E. Phillips
 Anita Philyaw
 Maud H. Pinkney
 Patrice Elaine Poole-King
 Katherine D. Potts
 Rita Jackson Powers
 Janis Gregg Pressley
 Paulette S. Quickley
 Jermaine Antonio Rawlings
 Henry J. Raymond
 Evelyn Faye Redic
 Leon Ray Reynolds
 Earnestine J. Richardson
 Mary L. Riordan
 Dante D. Robinson
 Jacqueline Robinson
 Selma Robinson
 Arthur Rochee
 Latria G. Rogers
 Vera O. Rogers
 Cynthia A. Roscoe
 Shavaun S. Ross
 Scott A. Rouch
 Shawn J. Rouse
 Barbara Jean Rucker-Boney
 Molly M. Ruppert
 Lucille S. Salisbury
 Tonya S. Saunders
 Barnabus D. Sewell
 Brandon Scott Sewell
 James Earl Sherrell
 Amy Davis Shipley
 Lynne E. Shivers
 Bobbie Jean Shockley
 Henry Ernest Simms
 Phyllis P. Sisson
 Alexis J. Smith
 Eleanor Smith
 Patricia Smith
 Benjamin E. Smith, Jr.
 Tiaira S. Sollers
 Audrey E. Solomon
 Sandra E. Spears
 Jennifer V. Spedden

John E. Spells
 Emerson Andre Springer
 Richard T. Stewart
 Sean N. Stewart
 Elizabeth W. Stroud
 Denise Stutson
 Dural Suite, Jr.
 Barbara Patton Talbert
 Joel Aaron Taylor
 Sherine N. Taylor
 Ella W. Templeton
 Lorena J. Thomas
 Ahsaki Lisa Thurman
 LaVerne Tiggler
 Charles Edward Tilley
 Annie Foote Tolson
 Cheryl A. Tracy
 Adrian Turner
 Jennifer Marie Turner
 Tracy Underwood
 Virginia Union University
 Joseph A. Urquhart
 Penick H. Wagstaff, Jr.
 Darryl C. Walkins
 Yuhua Wang
 James Allen Washington
 Lisa R. Washington
 Jewel Watson
 Jonathan Watson
 Wade A. Wegner
 George L. Wheeler, Sr.
 Pamela Wheeler-Taylor
 Josephine Whipple
 Khadeejah Timazee Whipple
 Brittany Denise White
 Monique Renee White-Chiselom
 Thomas H. Whitfield
 Charles & Carolyn Whitham
 Michael Brandon Whittington
 Doris A. Wilkinson
 Claudetta D. Williams
 Larry Williams
 David Franklin Williams, Sr.
 Henry L. Williams, Sr.
 Moses Williams, Jr.
 Randolph Williams
 William H. Williams, Jr.
 Tameka Jacqueline Wilson
 Lavata W. Wood
 Rosa Elaine Woody
 Teresa D. Wright
 Kevin Wynn
 Samuel K. Yego
 Gregory L. Yette
 Chaquita LaShawne Young

Tychelle Shalise Young
 Vincent Young
 Azene D. Zenebe
Supporters (\$1 - \$99)
 Acorn Renovations
 America's Charities
 AMF Laurel Lanes
 BSUNAA Anne Arundel Cty Chapter
 Chesapeake Bay Area
 Combined Federal Campaign
 Continental Construction & Assoc., LLC
 Counseling & Personal Empowerment
 Services, LLC
 Crazygood LLC
 Nail Taxi LLC
 Tendo Productions
 The MGIVE Foundation, Inc.
 Verizon
 Verizon Foundation
 Abimbola Ibiyemi Abereje
 Mary S. Abraham
 Patricia L. Adams Bias
 Stacey Lisa Adams
 Suzette Rosamond Adams
 Solomon Rashad Adderley
 Abraham A. Adigun
 James F. Adomanis
 Maame N. Adum-Bawuah
 Paul I. Agboli
 Ceci Michelle Aikens
 Oyedoyin Olufunmilayo Alabi
 Raymond E. Alcorn
 Claresse Lynette Alexander
 Kelly Alexander
 Sheila Ann Alford
 Andrea Renee Allen
 Ashley Denise Allen
 Francine T. Allen
 Valerie Allen
 Georgiola E. Allsup
 Della A. Amihere
 Barrington Anderson
 Carolyn W. Anderson
 Darlene Anderson
 Lawrence B. Anderson
 Morgan Brittny Anderson
 Patricia M. Anderson
 Sylvia Anderson
 William Anderson
 Yvonne Anderson
 Jim Anderson, Jr.
 Jenelle Vanessa Andrews
 Michele Anene
 Ifeoma Christy Anozie

Darlene S. Antezana
 Mary Diane Antonielli
 Margaret C. Archie
 Terry Theresa Arnold
 Marjorie Arrington
 Asisat Omotayo Ashagbe
 Juanita D. Ashbybey
 Jennifer Marie Ashton
 Manuela Opoku Asiedu
 Chinedu Joachim Asike
 Rashidi Jahi Assahna
 Olugbenga Oladipupo Atilola
 Jennifer Atkinson
 Ilemobayo Awosika
 Kolawole Awosika
 Paula Backus-Williams
 Betty J. Bailey
 Joyce Bailey
 Latroy Renee Bailey
 Shanice Nicole Bailey
 T. Kelsey Baines
 Marcus A. Ball
 Arlene Hunt Ballard
 Jamal E. Barbari
 Delores Barber
 Benjamin Morris Barksdale
 Jacquelyn Barksdale
 Latese Michelle Barksdale
 Ella Awkard Barnes
 Michael Barnett
 Darrell A. Barr
 Truman K. Barriteau
 Erica A. Barron
 Llyern Bartholomew
 Lisa Batchelor
 Ravi Bathini
 Robert & Susan Batten
 Daniel S. Baugher
 JoAnn Butterfly Baxley
 Rachel Lee Baylor
 Reisa Baynes
 Denise Marie Beales
 Evelyn Lorie Beauman
 Matthew T. Beck
 Taylor Beckett
 Brian Alan Beckham
 Francis Edward Beckwith
 Spencer A. Becton
 Patricia M. Behenna
 Olasumbo K. Bello
 Stephanie Bell
 Athea M. Bell-Burton
 Brian Sylvester Belt
 Theodora A. Belu-John
 Jazne' Lakarla Bemby

Mabel A. Beneze
 Mark Antonio Benjamin
 Stephanie A. Bennett
 Rona J. Bennett-Pemberton
 Erin L'nai Berry
 Robert D. Bess
 Eula Donelson Best
 Brenda J. Bethea
 Ashonda Monique Bethea-Ruth
 Ebo Cobbah Biney
 Avery Patrice Jade Bishop
 Takeisha Latoya Bivens
 Janice Jacobs Black
 Debbie Patrice Black-Conn
 Lee Antionette Blackmon
 Ronald A. Blackwell
 Barbara Ann Blassengale
 Ray Bledsoe
 Carolyn Blyther
 Della T. Bobian
 Karen Boggs-Herrod
 Fern E. Bond
 Carmen Tineshia Boone
 Marcella H. Bordley
 Carol A. Borum
 Karen A. Boston
 Everett A. Boswell
 Bernice S. Boulware
 Loubna Bousaidi
 Ethel M. Bowles
 Sandra C. Bowles
 Kenneth B. Boyd
 Marguerite R. Boyd
 Lucille B. Boyette
 Linda L. Bradford
 Wilbert Bradley
 Yvonne Yvette Bradley
 Haywood Bradley, Jr.
 Lamiae El Brahmi
 Tiffany Rochelle Brake
 Emilia A. Braxton
 Mynichia Braxton
 Maria Brebnor
 Mary Brevard
 Latonia Jenee Bridges
 Nikita Letita Bridges-Contee
 Faith D. Brinkley
 Winnie Brinkley
 Bettye Briscoe
 Joan L. Briscoe
 Donna Tiara Broadway
 Kiondra Broadway
 Patricia L. Broady
 Venetta Lucille Bronson
 Marshall C. Brookes
 Annette Brooks
 Brittney Michelle Brooks
 Constance E. Brooks
 Darrell W. Brooks
 John W. Brooks
 Marcus Adam Brooks
 Robert M. Brooks
 Atlantis Tye Browder
 Brittany Elizabeth Brown
 Clifton Brown
 Georgia L. Brown
 Glenda L. Brown
 Marcus Terrell Brown
 Stacey Michelle Brown
 Sampson Brown, Jr.
 Alexandria Victoria Browne
 Erlena C. Brown-Linthicum
 Esther L. Bruce
 Roger Bryan, Jr.
 Jamelle Bryant
 Marjorie B. Buie
 Phylicia E. Buie
 Wendy Bullock
 Mablelene S. Burrell
 Jasmine Racquel Burton
 Katrice Chante Burton
 Paris S. Burton
 Shannon Shante Burton
 Syreeta Darcell Helena Burton
 Keisha Amanda Buster
 Kathy L. Butcher
 Barbara Butler
 Charles V. Butler
 Linda Gray Butler
 Michael Eugene Butler
 Paul Butler
 Rebekah Grace Cabaltica
 Katherine M. Cadle
 Nancy A. Calabrese
 Lillie Caldwell
 Sonya V. Campbell
 Miriam R. Jones Cane
 Gloria Hargraves Cannon
 Julia E. Capizzi
 Timothy Ryall Carden
 Jason M. Carey
 Syreeta Montgomery Carey
 Miranda Ray Carington
 Lakisha Lynnette Carney
 Janay N. Carpenter
 Joseph Kevin Carpenter, III
 Jocelyn L. Carr
 Betty Carrico
 Clyde Carrington
 Sayuri Carrington
 Alice Faye Carroll
 Alicia B. Carter
 Denise Carter
 Evelyn Carter
 Karen H. Carter
 Lori J. Carter
 Mary Catten
 Erica Alana Chamberlain
 Catherine Chambers
 Donald Lee Chambers
 Angela E. Chamblee
 Joyce B. Chambliss
 Mary Chandler
 James R. Cheek
 Tiffany Nicole Cheek
 Adon C. Cherry-Bey
 Vera D. Chesley
 Dalitso Brian Chinkhota
 Michael Jarvis Chisley
 Susie Selby Chisolm
 Li-Lin Chiu
 Joan Chung
 Paulette I. Chung
 Jenell & Chris Clark
 David Clark
 Joyce Ann Clark
 Marcus Alexander Clark
 Martha Doralene Clark
 Katina Clarke
 Viris Jestena Clarke
 Anthony F. Clements, Jr.
 Sheila Diane Clinton
 Edythe Clomax-Tyson
 Mary E. Coates
 Tiffany Jamina Cohill
 Sheila Renee Colbert
 Alimatu Cole
 Candice Olivia Cole
 Linwood Kenneth Cole
 Norma Cole-Ljadunola
 Claudia A. Coleman
 Eric Lyles & Jenelle Coleman
 Rosalee L. Coleman
 Lamitra Doll Collier
 Andre P. Collins
 Roxie Purnell Connelly
 Martha Contee
 Clementine W. Conway
 Mable Eugenia Reid
 Conway
 Robert Conway
 Michael E. Cooper
 Pearline Rosaline Cooper
 Reginald F. Cooper
 Howard J. Cornish

Sama Corteh
 Erlene M. Council
 Marc Countiss
 Julius C. Cousar
 Noel Cox
 Jennifer Dixon Cravens
 Glenda Marcia Crawford
 Robert L. Crawford
 Marilyn A. Crosby
 Walter R. Crowder
 Keith Alan Cullings
 Jamal Rashad Cunningham
 Patsy Cunningham
 Phyllis Cunningham
 Roderick Renard Cunningham
 Steven C. Curbeam, Jr.
 Naomi Jean Curry
 Carl Curtis
 William K. Dacus
 Martin A. Dada
 Bianca Desiree Dade
 Carolyn Ford Dade
 Sharon Dade
 Charles Daley
 Bryan Stefawn Daniel
 Kimberly Daniel
 Rochelle R. Daniel
 Keisha Nicole Daniels
 Paul Alexander Danik
 Sylvia E. Dash
 Kossia M. Y. Dassie
 Julian V. David
 Annie P. Davis
 Debra A. Davis
 Heather Brooks Davis
 Samuel H. Dean
 Barbara Debrah
 Sasha D. Degree
 Brenda O. Dennis
 Alma L. Deruntz
 Verra B. Diggs
 Jan L. Dineen
 Denise Dinkins-Powell

Ernest Dinsmore
 Prudence M. DiPiazza
 Helen E. Dixon
 Brenda V. DoHarris
 Sally J. Doherty
 Bettie Marie Dorneval
 Carroll T. Dorsey
 Cassandra Dorsey
 Dolores Hemsley Dorsey
 Gregory J. Dorsey
 Agatha C. Dougans
 Marsha Melissa Douglas
 Cassie A. Duah
 Samuel Agyeman Duah
 Dineisha Nicole Duncan
 Sherron C. Duncan
 Otis C. Dupree
 Diane Beverly Eades
 Lourine Earley
 Peyton Easton
 Maria Esikanyibu Ebulu
 Sadie Hall Edelen
 Sarah S. Edmonds
 Stephen Edmonds
 Andrew Eugene Edwards
 Kennette Edwards
 Nancy A. Edwards
 Daryl J. Edwards
 Joshlyn Elizabeth Eggleston
 Elsie Bell Egling
 Craig & Lisa Eldridge
 Taibat F. Elesho
 Janel Elias
 Doretha Thomas Elliott
 Dorothy Faye Ellis
 Kimarie Engerman
 Frances S. Eppig
 Sacarra Gatilda Ernst
 Nayoka Irving, Esquire
 Chenere I. Evans
 Evelyn W. Evans
 Zara T. Evans

Marion Exum
 Charles E. Exum, Jr.
 Frederick D. Faine
 Meeyah S. Farley
 Karen Dshannan Farmer
 Theresa C. Farrow
 Clarethia Felder
 Lan Feng
 Tracy E. Fennell
 Deliphenia A Ferguson
 Elizabeth Brenda Ferguson
 Renee S. Fields
 Arnold R. Finlayson
 Oluseun O. Finnih
 Sandra V. Fitzgerald
 Margaret C. Flamer
 Angela S. Fleming
 Joyce C. Flowers
 Gail Linda Peace Fogg
 Andrew M. Fonoroff
 Samuel N. Fontaine
 Marcia A. Forbes-Gaynor
 Earl Vincent Ford
 Maria Marlene Ford
 Shirley Ford
 Teresa Darlene Ford
 Sireda Foster
 Lucinda J. Fox
 Ashley A. Foxworth
 Chanea Ayoola Fraser
 Larran Frasier
 Florence B. Frederick
 Michael Frye
 Kevin Ray Fuller
 Patricia A. Funderburk-McBride
 Malcolm L. Funn
 Jackson Gabriel
 E. Marie Gaddy
 James D. Gaddy, Jr.
 Audrey Koren Gaines
 Joyce Gaither
 Jamin Salim Gallman
 Bobby L. Gallon
 Yvette C. Galloway
 Charles Edward Gammons
 Stephanie R.A. Gantt
 Greta Garrett
 Jaki Jamil Garrett
 Pilar O. Garrett
 Nigel R. Garris
 Deborah B. Garrison
 Frances Garrison
 Jacquelyn R. Garrison
 Adrian Michael Linley Gaskin
 Desha Ann Gaskins

Melody Stevenson Gaskins
 Charlene J. Gaston
 Sharon Delores Gaston
 Michael L. Gavin
 Bendu N. Gbehngheh
 Janette Gearing
 Julius Ade George
 Jennifer Evon Geter
 Shirley Gilbert
 Denise Robin Giles
 Sheila Joy Brooks Giles
 Crystal Sheree Gillespie
 Thomas P. Gilligan
 Ingrid D. Gist
 Calvin J. Givens
 Charles A. Godfred
 Rosetta Goff
 Recie Renee Goins
 Kimberly D. Goldberg
 Roslyn Taylor Goode
 Jean G. Goode-Stahl
 James Goodine
 Shannon H. Goodwin
 Jeanette Gordon
 Lois Jane Gorman
 Danielle Gourley
 Theresa Govan
 Danike C. Grant
 Alfreda Graves
 Lestine W. Graves
 Brenda W. Gray
 Sheila C. Gray
 Crystal V. Green
 Elston H. Green
 Gary W. Green
 Gloria E. Green
 Marion Green
 Shameca Laronne Green
 Sharon J. Green
 Tanya Y. Green-DeShields
 Paula V. Greene
 Sally J. Greene
 Sharron Greene
 James Walter Greenlee
 Dante' Evan Gregory
 Renee Manago Griffin
 Sharlene Grimes
 David Grogan
 Monika Gross
 Neeraja Gomma
 Stacey K. Gunn
 Regina G. Guyther
 Margaret Haaser
 Rebecca Hoff Hackley
 Courtney A. Haggins

Alvin C. Hailstorks
 Cara Estere Hairston
 Angela S. Hall
 Barbara C. Hall
 Laverna Hall
 Leslie D. Hall
 Nicole Lynnette Hall
 Datasha Dominique Hallman
 Claudette K. Hamerski
 Viola E. Hamilton
 David S. Hammond
 Tammy Terrell Hancock
 Dorothy Handy
 Nikki Handy
 Marguerite F. Harding
 Kimberly D. Hardy
 Dolores Harmon
 Christine P. Harrell
 Ashley M. Harris
 Keith Samuel Harris
 Kevin Matthew Harris
 Tawana C. Harris
 Victoria Ashley Harris
 Waverley Harris
 Andrea C. Harrison
 Cecelia S. Mishoe Harrison
 Mary S. Harrison
 Robert Anthony Hart
 Fannie Harvey
 Garcia P. Harvey-Chapman
 Dewayne S. Hawkes
 Marlena Jean Hawkins
 Raymond T. Hawkins
 Shirley Y. Hawkins
 Swynice M. Hawkins
 Jasaad Halim Hayer
 Danny Hayes
 Mecca Mae Hayes
 Stephen P. Hayleck
 Euwanna A. Heard
 Julia Elizabeth Heard
 Valerie E. Hebert
 Patricia H. Hebron
 Shana Nicole Helton
 Aaron Timothy Henderson
 Jean E. Henderson
 Kelvin C. Henderson
 Richard E. Henderson
 Ronice Alysia Henneman
 Eric T. Henry
 Marie Leonie Henry
 Njeri N. Henry
 Jeanette C. Hepburn
 Rebecca L. Herndon
 Tina M. Heyward



Keith Randall Hicks	John A. Jacob	Jonetta Dorothea Jones	Nancy T. Lee	Domonique Latrice Malloy	Kimberly E. McLurkin-Harris	Adrienne E. Montgomery	Joan Freeland O'Neal
Valerie R. Hicks	Terri H. Jacques	Mary Gladys Jones	Stacey N. Lee	Keith R. Mann	Joan McNair-Dorsey	Artis Montgomery	Cassandra B. O'Neal
Yvonne T. Hicks	Kadie Ballah Jalloh	Mary Mason Jones	Karen Denise Lee-Barton	Linet Nonji Manono	Ruth Weedon McNeal	Joi Montgomery	Nnenna E. Onokala
Ann Hilliard	Ebrima A. Jallow	Melanie Alisia Jones	Francisco Leonard	Constance B. Marable	Theresa Carter McNeal	Robert M. Montgomery	Jenelle Stacey Onyenemezu
Sherrice S. Hinds	Monty Jamerson	Ophelia R Jones	Ruth Courtney Leonard	Kenneth John Marchetti	Kendra Nicole McNeill	April L. Moore	Priscilla T. Oredugba
Jacqueline Hines	Douglass James	Sheryl L. Jones	Rachel Leonidas	Cassandre B. Martelly	Randy McRae	Dewana Moore	Kennedy Imona Oseghale
Carolyn Mister Hobbs	Gretel T. James	Sylvia P. Jones	Monica Patricia Lester	Patrick C. Martinez	Rodney Means	Marco Shay Moore	Melody M. Otero
Irma Ruth Holland	Kevin L. James	Terry Jones	Ann Lewis	Denise K. Matteson	Celeste W. Meares	Plato Z. Moore	Barbara A. Ott
James R. Holland	Londa K. James	Vanessa H. Jones	Audrey Davis Lewis	Portia F. Matthews	Marie Meehan	William T. Moore	Sheila F. Outlaw
Robert Holland	Jasper L. James	Victoria Jones	Caroll Veronica Lewis	Kerell S. Maxwell	Bernadette Sharp Melvin	George Moose	Ruth Cox Owens
Sharon Holley	Kenneth W. Jamison	William Jones	Clara Mae Lewis	Abdou W. Mbye	Jacqueline Melvin	Cherita Constance Moran	Christina Palko
Robert Lee Hollman	Michele Jaundoo	Barry Albert Jones, II	Lakia Tanisha Lewis	Danielle Hattie McCain	E. Clark Mester, Jr.	Emily Jill Morgan	Naveen Sundar Pallepamu
Wendell M. Holloway	Maria A. Jeffers	Cordell Leon Jones, Jr.	Peggy L. Lewis			Edward T. Morgan, Jr.	Jacqueline Y. Palmer
Jeffrey Orel Holmes	Michael J. Jenifer	Evelyn Griffin Jordan	Tiana Leandra Lewis			Sereeta Nicole Morrison	Anthony J. Pankey
John M. Holmes, III	Taunya L. Jenkins	Jessie "Jackie" Williams Jordan	Wanda Brinkley Lewis			Delores L. Mosby	Sara E. Pankey
Shirley M. Holt	Ann Jennings	Donna P. Joseph	Lijian Li			Shadonne Cherry Moses	Hermon L. Parker
Joan E. Lawson Horsey	Kisha Reid Jennings	Arlene Gans Josephowitz	Trevor A. Liburd			Charles E. Moulden	Marian Parker
William Hough	Wanda J. Jeter	Marion J. Kaiser	Lucille B. Liggins			Krystle M. Mudd-Neclos	Mary Chase Parker
Glendora H. Howard	Stephanie L. Jimmerson	Rose Chinasa Kajuru	Vasant R. Limaye			Carl E. Muldrow	Michael Parker
Grace Ellen Howard	Adiatu A. John	Olusola O. Kalejaiye	Yolanda Lindo			Jeannette Monique Murray	Sandra M. Parker
Shirley S. Howard	Richardson John	Vikram Kumar Kallepu	Khylah Lindsey			Paulette A. Murray	Dudley Elliott Parris
Theodore Howard	Alicia Dyane Johnson	Yassin Kargbo	Jane Farrell Link			Odessa J. Murray-Cornish	Eduardo Enrique Parris, Jr.
Wayne Antonio Howell	Annabelle Scott Johnson	Nancy L. Kaufman	Joan C. Linstrom			Diana Z. Mustafa	John R. Pasteur
Arvel Howerton	Annie L. Johnson	George F. Kelly	Erlena C. Linthicum			Evelyn Myers	Barbara Patterson
Lawrence A. Hubb	April Lynn Johnson	Marianne Russell Kendrick	Detra E. Little			Ruby Y. Newton Myers	Brett Edwards Patterson
Chela V. Hudgens	Crystal Johnson	Eileen B. Kennedy	Darin E. Lloyd			Betty Myles	Eric Patterson
Charla Lynae Hudson	Diondra T. Johnson	Elizabeth Kennedy	Demi Antonette Lloyd			Rebecca Jean Mysiuk	Alexis Paye
Doris A. Hughes	Dion Kenric Johnson	Carol E. Kenney	Nicole Erica Lobban			Cecilia Natoli	Stephen Pearson
Dorothy I. Hughes	Jessica Denise Johnson	Daniel Holden Kent	Lawan D. Locke			Crystal Moore Naylor	Alma Pendelton
Franklin Charles Hughes	Larry M. Johnson	Keisha D. Kerr	Margaret J. Lockett			Lorraine Neal	Tiffany Renee Peoples
Herbert & Pearl Hughes	Lateasha C. Johnson	Sheila Key	Carlton London			Ashley Danielle Nelson	Yamir A. Perez
Vivian C. Hughes	Leola Sullivan Johnson	Alaiyo M. Kiasi-Barnes	Lorna Londot			Lamont Hasson Nelson	Jazzmine Nicole Perry
James L.E. Hunt	Mary Susan Johnson	Kimberly N. Kidd-Watkins	Lynne G. Long			Mary Gregg Newman	Javita LaVonne Person
Linda Hunt	Michael Johnson	Franklin Killebrew	Susie A. Long			Brian Nicholas	Sharon E. Person
Claude C. Hunter	Perry A. Johnson	Chrisline A. King	Jon Love			Tony Nichols	Victoria Johnson Person
David A. Hutchins	Regina L. Johnson	Denton M. King	Kay C. Love			Rayna Leora Nickens	Kevin Lamont Pertee
Williams Hutchins	Richetta Johnson	Janna E. King	Latoya Linda Love			Maduka U. Nnadozie	Dwayne Petersen
Nicole L. Irby	Sonja C. Johnson	Kathy Lynn Kirby-Yorkshire	Maxine L. Lowery			Olivia Laverne Nolan	Jervie Scott Petty
Magusta Isom	Tasman Johnson	Akosua K. Kumi	Richard Lowery, III			Calvin T. Noplin	Nelson R. Petulante
Marcus Noland Isom	Troy Johnson	Victoria Alaba Kuyoro	Javors & Dora Lucas			Charles U. Nwachukwu	Fannie Turner Pierce
Daniel Ives	Wayne Johnson	Barbara Ennels Lake	Tanya P. Lyle			Uzoma Nwankwo	Alvin G. Pindell
Barbara T. Jackson	Kina M. Johnson-Malcolm	Musu Saine Lamin	Pauline M. Lyles			Catherine Adaku Nwokefor	Charlyne B. Pinkney
Charles Jackson	John Michael Joly	Sharon Lamy	Ricardo Lyles			Chinwendu Ogechi Nwokefor	Edna M. Pinkney-Toon
Derek Dyonte Jackson	Bonnie R. Jones	Jojene B. Landon	James Raymond Lyles, Sr.			Mxolisi M. Nyathi	Michelle Pitts
Lillie M. Jackson	Brannon C. Jones	Kristal Lane	Mary Cullen Lynch			Avery P. Ogletree	Sekeena Marie Plush
Lori Jackson	Charleita L. Jones	Joan Langdon	Leila C. Macabulos			Babatunde Oluseyi Ogunbanjo	Kenneth Poinsette
Marsha E. Jackson	Debra R. Jones	Rosow Darlene Lang-Koonce	Ida F. Macer			Bridgette Aderonke Ogunmokon	Tamika Rashan Porter
Natasha Sharlene Jackson	Delydia M. Jones	Elizabeth West Langston	Shanel Mackall			Adeyemi O. Ojomo	Courtney Yvonne Potter
Pamela S. Jackson	DeShawn Jones	Theresta Lanier	Darnisa Plater Magassouba			Omonhodion G. Okojie	Zachary Powell
Teddi Rene Jackson	Doris Pinder Jones	Alaya Lynae Larry	Benjamin D. Magno			Toyin B. Olasehinde	Ingrid Powell-Price
Thelma Jackson	Ellen Louise Jones	Victoria Jacqueline Laurey	Edith M. Magruder			Dianne Polson Oliver	Jonathan L. Preston
Trent C. Jackson	Faith Thomas Jones	Jura Lean Lawler	Debra Carrington Major			Isaac Oliver	Tracie Prevost
Victor Allen Jackson	Gregory Jones	Vernell Lawson	Irene Bankins Mallory			Pamela D. Oliver	James Vincent Price
Vivian B. Jackson	Jean Pumphrey Jones	Michael Lydell Lay, Jr.				Peggy Lansbach O'More	Rosetta O. Price
Barbara Jackson-Nash	John H. Jones	Glossie Leake				Imani T. Omowale	Fred Price, Jr.

“They have enabled me to attend a four-year college and excel toward my goal of becoming a pediatric occupational therapist. I am the youngest of three children, and with two of us attending college at the same time, it was a true financial hardship for my parents that the scholarships helped to ease.”

— Shakiyla Viarra Shockley
Senior, Child and Adolescent Studies

John Mason McCarter	David F. Michals, Sr.
Natalie Marie McCarter	Medrick Jude Michel
Lee McClain	Tracey A. Middleton
Michelle Nicole McCleary	Eleanor I. Miles
Roslyn G. McCloud	Benjamen A. Miller
Terri Lajuan McColl	Elizabeth S. Miller
Marvin McCoy	Helane Smith Miller
Sarika Nicole McCoy	Hortense Miller
Susan McCoy	Ruth Pinkney Miller
Nicole G. McCray-Garrett	Sheila G. Miller
Charlene L. McCullough	Alice B. Mills
Joyce McDaniel	Eric K. Mills
Alicia Rochelle McDonald	Lola J. Mills
Paul McDonald	Marsha A. Mims-Word
Alonzo P. McDuffie	Gregory Webster Minix
Dino R. McFadden	Seth Sheldon Minter
Gloria S. McFadden	Roderick Missouri
Deborah S. McFarland	Cassandra Dianne Mitchell
Kesi Reah McFarlane	LaVerne D. Mitchell
Cheryl D. McGaw	Quinton D. Mitchell
Christina Ann McGill	Ricardo C. Mitchell
Jacqueline West McGlen	Valerie M. Mitchell
Mary Lou McKenna	Arthur Mitchell, Jr.
Loretha M. McKissic-Coleman	Calvin Mitchell, III
Ifalade I. McKnight	Leslie A. Mobray
Jordan McKnight	Julius Mock
Lakeisha Tomlin McKnight	Eloise J. Molock

Nancy N. Prinkey
Ann C. Proctor
James Edward Proctor
Marion Lamers Pronk
Nicole Pryor
Vera J. Pryor
Tiffany R. Quarid
Mary Quarles
Teresa Jena Queen
Sonja M. Queen-Bostick
Sreekala Radha
Gladys Queen Ramey
Roni Lanika Ramos
Katrina Yvette Ramsey
Charles Wilfred Rand
Colette Michelle Ransom
Gayathri Raghu Rao
Iris Rattley
Tawana L. Rauls
Kimberly F. Rayford
Martha E. Redman
Joseph D. Redmiles
Irene E. Reed
Travis Durell Reed
William D. Reed
Ruth N. Reid
Mellisa J. Rhinehart
Jeysha R. Rhodes
Davonne C. Rice
Alvin K. Richardson
Vincent A. Richardson
Ronnie Richmond, II
Joseph W. Richter
Dionna D. Ricks
Cynthia Y. Riddick
Mary E. Riddick
Juanita C. Roberts
Leon R. Roberts
Rachel R. Roberts
Charles Robinson
Elva Taylor Robinson
Maurice R. Robinson
Sonja D. Robinson
Thelma M. Robinson
Yvonne Rodbell
Daniel A. Rogers
Windell Rogers
Ruth Rogofsky
Dawn A. Rolen
Robin Rollins
James C. Rosapepe
Joanne Ross
Kathryn Rattley Ross
Deborah W. Rouse
Sharon Miller Rowell

Joan P. La Rue
D Maxine Rush
Davon Rush
Munir Hakim Rushdan
David A. Russell, Jr.
Heidi Denise Ruster
Cheryl Ryles
Sia Masarah Saffa
Lashawna I. Saint-Preux
Kamaria Erin Salau
Judith G. Salzman
Mahshid Samiei
Sylvia Marie Sampleton
Karen E. Sams-Davis
Norman C. Sanders
Christopher R. Sandoval
Erica M. Santiago
John L. Satterthwaite
Gale Y. Saunders
Raynette S. Savoy
Veronica Anita Scales
Susan Schertzer
Gersende B. Schleicher
Linda Schleicher
Theresa Scisney
Alicia M. Scott
Bradley J. Scott
Camille Outlaw Scott
Kenneth Scott
Tracy Nelson Scott
Jacqueline Octavia Sease
Anne S. Seitz
Haja Aminata Sesay
Henrika L. Settles
Camille A. Sewell
Alia M. Shabazz
Alonia Fletcher Sharps
Elaine Shaw
Nealee K. Sheffield
Craig Shields
Tolisha K. Simmonds
Emanuel L. Simmons
George C. Simmons
Richard Simmons
Thelma Simmons
Natasha Nicole Simon
Teleshia Danielle
Simpson
Mack B. Simpson, Jr.
Kimberly Sims
Renee Sims
Aaron Sinclair
Renee Singleton
Marcus White Skelton
Eva Skrenta

Helen K. Slaughter
Joan Smallwood
Barbara J. Smith
Corey Santos Smith
Deborah Nina Smith
De'Ronte Lamont Smith
Donna M. Smith
Earl Smith
Eddie Smith
Fernanda Smith
Guffrie M. Smith
Helen Mae Smith
John N. Smith

Stephen Alan Smoot
Davine Snead
Marianne Sokol
Loison C. Souvenir
Tracey L. Spain
Lawrence Speed
Andre Jake Speedieberg
Boone C. Spencer
Rasheda S. Spratley
Sandra Lee Spriggs
Antionette Faye St. Clair
Mary Louise Stanton
Michelle Lynn Starkey



Bowie State University
is a grateful community,
thankful for the generosity of the
many alumni, friends, corporate
and foundation partners who
contribute to the ongoing success
of our students.

Karen R. Smith
Phyllis Smith
Richard D. Smith
Rose B. Smith
Shelia M. Smith
Shirley Mae Smith
Tonya Talley Smith
Vondelear D. Smith
Deanna Marilyn Smoot

Robert E. Steele
Bernadine T. Stephenson
Kecia N. Stevenson
Priscilla Steward
Reginald J. Stewart
Diago Donald Stinson
Shantee' M. Stubbs
Phillip E. Stukes
Rheta L. Suit

Miriam Melissa Summers
Richard L. Sutherland
Serena Jackson Sutton
Evelyn M. Svoboda
Daphne A. Swaggerty
Andrea L. Syphax
William M. Talbert
Sylvia Ann Talbert-Coger
Rose Tasker
Kendra Michelle Tate
Bertina Marie Tatum
Lorraine S. Tatum
Denni R. Taylor
John Taylor
Joyce Taylor
Rickey A. Taylor
Winona Taylor
Andre Jacques Teague
Nkenge A. Temoney
Leonard Terry
Mumbi Thande
Barbara Jean Thomas
Brenda J. Thomas
Brittany Andrea Thomas
Charmaine Lavon Thomas
Clara E. Thomas
Francis B. Thomas
George Thomas
Joann R. Thomas
Karen Nichole Thomas
Laura Thomas
Ramona Thomas
Anthony Thompson
Deborah Tiffany Thompson
Gina Renee Thompson
Joshua Eleazar Thompson
Lia C. Thompson
Olivia Moore Thompson
Tracey Thompson
Yvonne T. Thompson
Karen Thorn
Earl S. Thorne
Joy Dorsey Thornton
Marilyn J. Thrower
Robert J. Thurston Jr
Lena C. Tilghman
Bonita Q. Tillman
LaVerne Cecelia Tinsley
Louise Tolbert
Walter Tolliver
Anthony J. Toomer
Cathy J. Toomer
Della Torney
Valencia Townsell
Dawn Johnetta Treece

Lorenza Trotter
Vivian E. Truxon
William Tunney
Chanel Turner
Erica K. Turner
Francell G. Turner
Frances R. Turner
Gloria Ann Turner
Joyce Mae Turner
Johnnie Tutt
Edna Marie Tyler
Karen D. Tyler
Lanita Ann Tyler
Richard Tyler
Rhonda Yolanda Unger
Dewayne Kevin Upchurch
Aileen L. Urbiztondo
Yolanda Vercine Urquhart
Nakeia Valentine
Freddie T. Vaughns
Jeffrey Scott Vergiels
Cherae Vickers
Lonnie Vicks
Margaret L. Vigneulle
Laura L. Waddell
Lorraine F. Waddell
Darren Emanuel Wade
John Earl Wagner
Tonya Lavon Wagoner
Reynold Walbrook
Crystal L. Walker
Doris Jean Walker
Kevin C. Walker
Kimberly D. Walker
Melvin V. Walker
Pamela L. Walker
Shirley H. Walker
Katrina Lanet Wallace
Roger C. Wallace
Tracey L. Wallace
Vonda J. Ward
Gerald Ward, Sr.
Jerry J. Waring
Destiney Renee Washington
James Phillip Washington
Taylen Harold Washington
Kenneth Eugene Washington, Jr.
Leon Washington, Jr.
Agnes Chittams Waters
Darryl Dwayne Watkins
Connie Watson
Jearsel F. Watson
Kiera J. Watson
Nelika-Fai Lashawna Watson
Tiffany Anastasia Watson

Victoria T. Weaver
Annette Wedderburn
Tamara Yvette Wellons
Nashelle Nakeitha Wells
Susan Wells
Brian Kenneth Wenk
John Whelan
Veda Whisnant
Brian Keith White
Claudia Tishonne-Bernae White
Eleanor White
Jaime Cierra White
Nakia Victoria White
Norman P. White
Samuel L. White
Meagan Deanne Whitfield
Valery Evelyn Whitfield
Monique Dinene Whitney
Beverly A. Whren-Guyton
Carolyn Wickline
John Wiley Sr.
Brenda J. Wiley
Rebecca A. Wiley
Allan Charles Williams
Alonzo Williams
April Williams
Bobby Williams
Cassie Alexis Williams
Chelsea L. Williams
Debbie Cogman Williams
Dwight F. Williams
Erma L. Williams
Ernest Williams
Judith Claire Williams
Kerri Denise Williams
Krista C. Williams
Leonard Williams
Margaret F. Williams
Nia J. Williams
Paris Deloris Williams
Reginald Williams
Rene Williams
Sarah Smith Williams
Susan E. Williams
Tanisha Denise Williams
Adarin Lamont Williamson
Altha B. Williamson
Wanda Y. Willis
Renee Wills
Bertha B. Wilson
Diane E. Wilson
Eva Wilson
Judith L. Wilson
Karlton Elliot Wilson
Kelvin Wilson

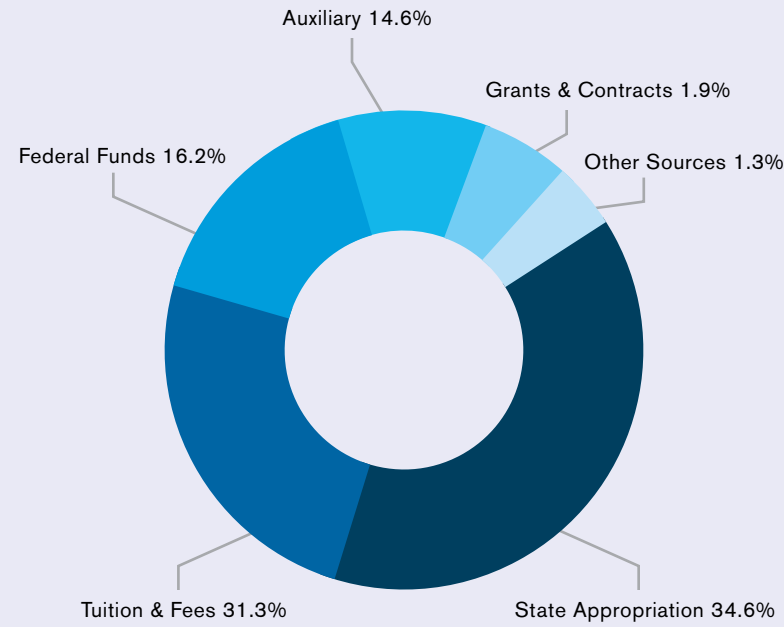
Levorne Wilson
Reginald Wilson
Cora Cottman Wilson-Walters
Erika Erin Wimbush
Paul Winder
Adrienne C. Winfree
Linda M. Wise
Lisa Wiseman
Emanuel A. Witherspoon
Beathsader M. Womble
Donald Wood
Emma Woodard
Rio A. Woodard
Charon Wood-Hines
Imogene F. Woodley
Jamiliah A. Woodley
Cheryl Denise Woods
Sean Woods
Tiffini V. Woody-Pope
Maria Woolery
John A. Word, Sr.
Mildred Richardson Worthy
Courtney L. Wright
Howard Wright
Jeanne W. Wright
Colonel James E. Wyatt
Jennifer Carol Wyatt
Diriba Worku Yadessa
Jie Yan
Christina A. Yingling
Pearson S. Yolanda
Arthur Young, III
Carolyn P. Young
Kevonya Lashon Young
Randy Young
Shynesha Ghermian Young
Maureen Ziegler
Michelle D. Zumpano

Budget For Operations (in millions)

REVENUES

■ Tuition & Fees	\$32.4
■ State Appropriation	\$35.8
■ Federal Funds	\$16.8
■ Grants & Contracts	\$1.9
■ Auxiliary	\$15.1
■ Other Sources	\$1.4

TOTAL \$103.5

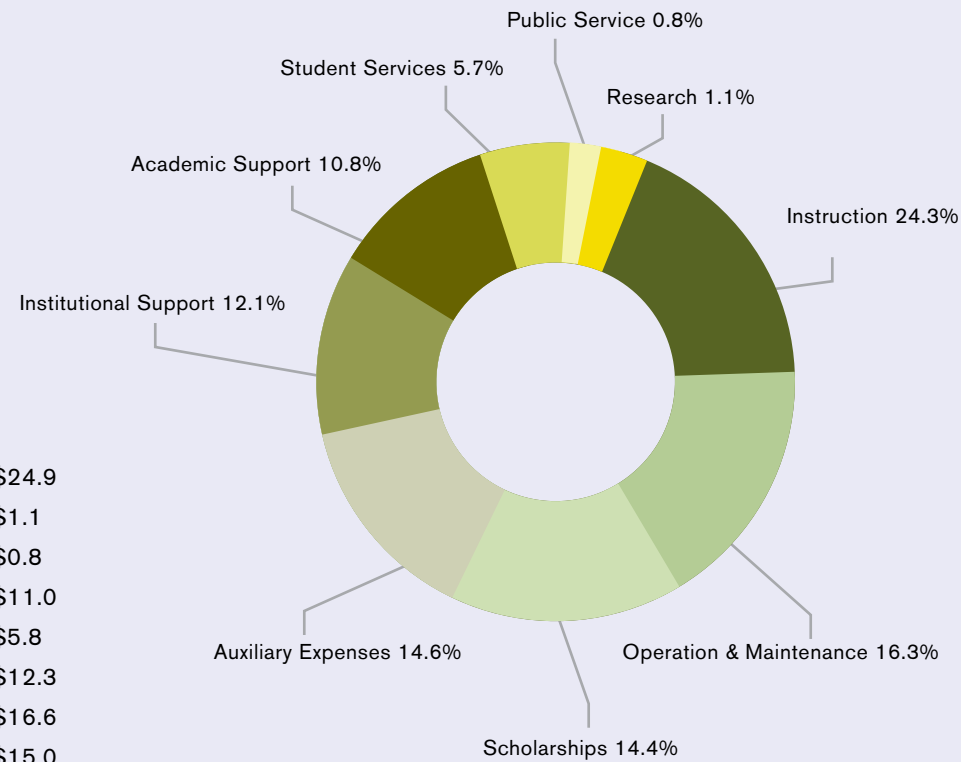


Budget For Operations (in millions)

EXPENDITURES

■ Instruction	\$24.9
■ Research	\$1.1
■ Public Service	\$0.8
■ Academic Support	\$11.0
■ Student Services	\$5.8
■ Institutional Support	\$12.3
■ Operation & Maintenance	\$16.6
■ Auxiliary Expenses	\$15.0
■ Scholarships	\$14.8

TOTAL \$102.4



CABINET

- PRESIDENT**
Dr. Mickey L. Burnim
- INTERIM PROVOST AND VICE PRESIDENT FOR ACADEMIC AFFAIRS**
Ms. Karen Johnson Shaheed, Esq.
- VICE PRESIDENT FOR FINANCE AND ADMINISTRATION**
Dr. Karl B. Brockenbrough
- VICE PRESIDENT FOR STUDENT AFFAIRS**
Dr. Artie L. Travis
- VICE PRESIDENT FOR INSTITUTIONAL ADVANCEMENT**
Dr. Richard L. Lucas, Jr.
- INTERIM CHIEF INFORMATION OFFICER**
Ms. Marivic Weiss
- INTERIM GENERAL COUNSEL**
Ms. Antionette Marbray, Esq.
- DIRECTOR OF ATHLETICS**
Mr. Anton Goff
- DIRECTOR OF UNIVERSITY RELATIONS AND MARKETING**
Ms. Cassandra Robinson

BOARD OF VISITORS

- CHAIR**
Mr. D. Michael Lyles, Esq.
- VICE CHAIR**
Ms. Colette Youngblood
- SECRETARY**
Rev. Dr. Cynthia A. Snavelly
- Mr. Ken Blake
- Mr. Tabb J. Bishop
- Ms. Toni Braxton
- Ms. Essie L. Calhoun
- Mr. Raoul Dennis
- Dr. James A. Dula
- Mr. Jim Estep
- Mr. Jeffery Franklin
- Mr. Dante Lee
- Mr. Stephen Neal
- Mr. Lionel Neptune
- Mr. G. Steve Proctor
- Ms. Rhonda L. Slade
- Mr. Larry Spriggs
- Mr. William R. Teel, Jr.
- Dr. Sherece Y. West

BOARD OF DIRECTORS
Bowie State University Foundation

- CHAIR**
Ms. Jacqueline W. Sales
- VICE CHAIR**
Mr. Harmon L. (Monty) Cooper
- EXECUTIVE DIRECTOR**
Dr. Richard L. Lucas, Jr.
- TREASURER**
Mr. Keith A. Holmes
- SECRETARY**
Ms. A. Toni Lewis
- Mr. Robert J. Antonetti, Jr.
- Mr. Thomas H. Graham
- Mrs. Mildred Ridgley Gray
- Mr. Jason L. Groves
- Ms. Lillian Holt
- Mr. C. Glenn Mahone
- The Honorable Douglas J.J. Peters
- Mr. Andrew M. Roud
- Mr. Craig L. Stevenson
- Ms. Kimberly Stokes
- Mr. Albert R. Wynn
- EX-OFFICIO**
Dr. Mickey L. Burnim
Dr. Karl Brockenbrough
Ms. Cynthia Jackson

BOARD OF REGENTS
University System of Maryland

- | | | | |
|--|---|--|--|
| CHAIR
Dr. Patricia S. Florestano | ASSISTANT TREASURER
Dr. John L. Young | ASSISTANT SECRETARY
Mr. Thomas G. Slater, Esq. | EX-OFFICIO
Mr. Earl F. Hance |
| TREASURER
Mr. Gary L. Attman | SECRETARY
The Hon. C. Thomas McMillen | STUDENT REGENT
Mr. Collin Wojciechowski | UNIVERSITY SYSTEM OF MARYLAND CHANCELLOR
Dr. William E. Kirwan |
| | Mr. Orlan M. Johnson | Mr. Barry P. Gossett | |
| | Mr. Norman R. Augustine | Ms. Linda R. Gooden | |
| | Ms. Louise M. Gonzales | Mr. James L. Shea | |
| | The Hon. Francis X. Kelly, Jr. | Mr. David Kinkopf | |
| | Dr. Frank M. Reid, III | Dr. Paul L. Vance | |



CREATED BY:

Office of University Relations and Marketing
Bowie State University
Thurgood Marshall Library Room: 249
14000 Jericho Park Road
Bowie, MD 20715

CASSANDRA ROBINSON
Director

DAMITA CHAMBERS
Assistant Director, Public Relations

OLUSHOLA KALEJAIYE
Graphic Designer

