

General Faculty Meeting with President Mickey L. Burnim



December 13, 2012

Topics of Discussion

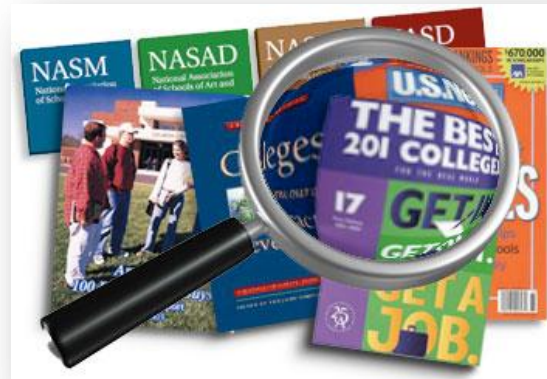
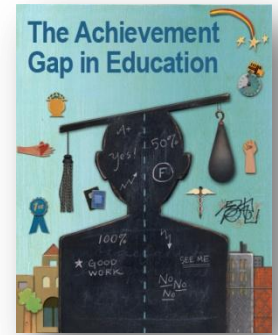
- Institutional Priorities
- AASCU Presidential Mission to Brazil
- Closing the Achieving Gap
- Academic Transformation Landscape
- MHEC Performance Funding Task Force
- Key Visibility Initiatives Update
- Campus Updates

2013 Institutional Priorities

1. Improve graduation rates and close the achievement gap.
2. Improve the academic program inventory with an emphasis on identifying two signature programs.
3. Enhance the funding stream through growth in grants, contracts, fundraising, and auxiliary enterprises.
4. Implement a strategic approach to building BSU's reputation and developing brand recognition.
5. Realize savings through enhanced efficiency and effectiveness initiatives.
6. Implement assessment strategies and activities university-wide.

Big Intermediate Objectives

1. Achieve a 60% 6-year graduation rate by 7/1/16
2. Successfully complete the \$15 million “BIG Campaign” by 11/15/13
3. Become a nationally prominent university by 7/1/16



AASCU Presidential Mission to Brazil

American Association of State Colleges and Universities

Purpose and Report

- President Obama's "100,000 Strong in the Americas"
- Brazilian President Rousseff's "Science without Borders"

Opportunities

- BSU's Strategic Plan
 - Explore inter-institutional learning opportunities through conferences, study abroad, and academic exchanges
- BSU Task Force
 - Provost Weldon Jackson forming task force to explore Brazilian educational exchange opportunities

As part of a delegation of university presidents, chancellors, and international officers, Dr. Mickey L. Burnim participated in a higher education mission to the Federative Republic of Brazil from November 7-17, 2012.



The graphic features a collage of photos showing students and officials. The main title is "100,000 Strong in the Americas". Below it is a quote from President Barack Obama: "...the United States will work with partners in this region, including the private sector, to increase the number of U.S. students studying in Latin America to 100,000, and the number of Latin American students studying in the United States to 100,000." A date stamp reads "La Moneda, Santiago, Chile, March 21, 2011".

Below the quote is a photo of President Obama at a podium. To the right is a text block: "In March 2011, President Barack Obama launched '100,000 Strong in the Americas,' an initiative to increase international study in the Western Hemisphere. The purpose of 100,000 Strong is to foster region-wide prosperity through greater international exchange of students, who are our future leaders and innovators. Increasing understanding in the Western Hemisphere and building closer people-to-people ties will help the State Department work together with the people of the Western Hemisphere to address common challenges including citizen security, economic opportunity, social inclusion, and environmental sustainability."

At the bottom, there are four columns of text:

- Partnerships:** The Department of State is working to implement 100,000 Strong in the Americas through partnerships - with foreign governments, with universities and colleges, and with the private sector. EducationUSA (educationusa.state.gov), a network of more than 100 U.S.-Government-supported advising centers throughout the Hemisphere, is a centerpiece of our partnership and outreach efforts.
- Universities and Colleges:** We are working with institutions in the United States and throughout the Hemisphere to encourage expanded exchanges and closer partnerships between U.S. and Latin American universities and colleges.
- Private Sector:** The U.S. government, in partnership with governments in the region, strongly supports exchanges through Fulbright, Gilman, and other scholarship programs. Reaching beyond these programs, we seek contributions from the private sector to support scholarships. Any such funding will go directly to the organization administering the program the donor wishes to support.
- Foreign Governments:** Most governments in the region provide scholarships to enable top students to study abroad. Brazil's "Science without Borders" scholarship program plans to send 75,000 Brazilians to study abroad over the next four years, with up to half coming to the United States. The United States has worked closely with Brazil to coordinate the U.S. portion of this program. We seek opportunities to cooperate with other governments on student advising, assistance with placement, and coordination to ensure timely access to educational and visa services.
- Diversity:** We are promoting a more diverse profile of students who participate in educational exchanges and their destinations. The Department of State is reaching out to diverse institutions throughout the United States including Historically Black Colleges and Universities, Hispanic-serving institutions, Native American Tribal colleges, and community colleges. We are working with Latin American and Caribbean governments, universities, and the private sector to provide international study opportunities for students from disadvantaged backgrounds or historically underserved populations.

United States Department of State - Bureau of Western Hemisphere Affairs - www.state.gov

Closing the Achievement Gap

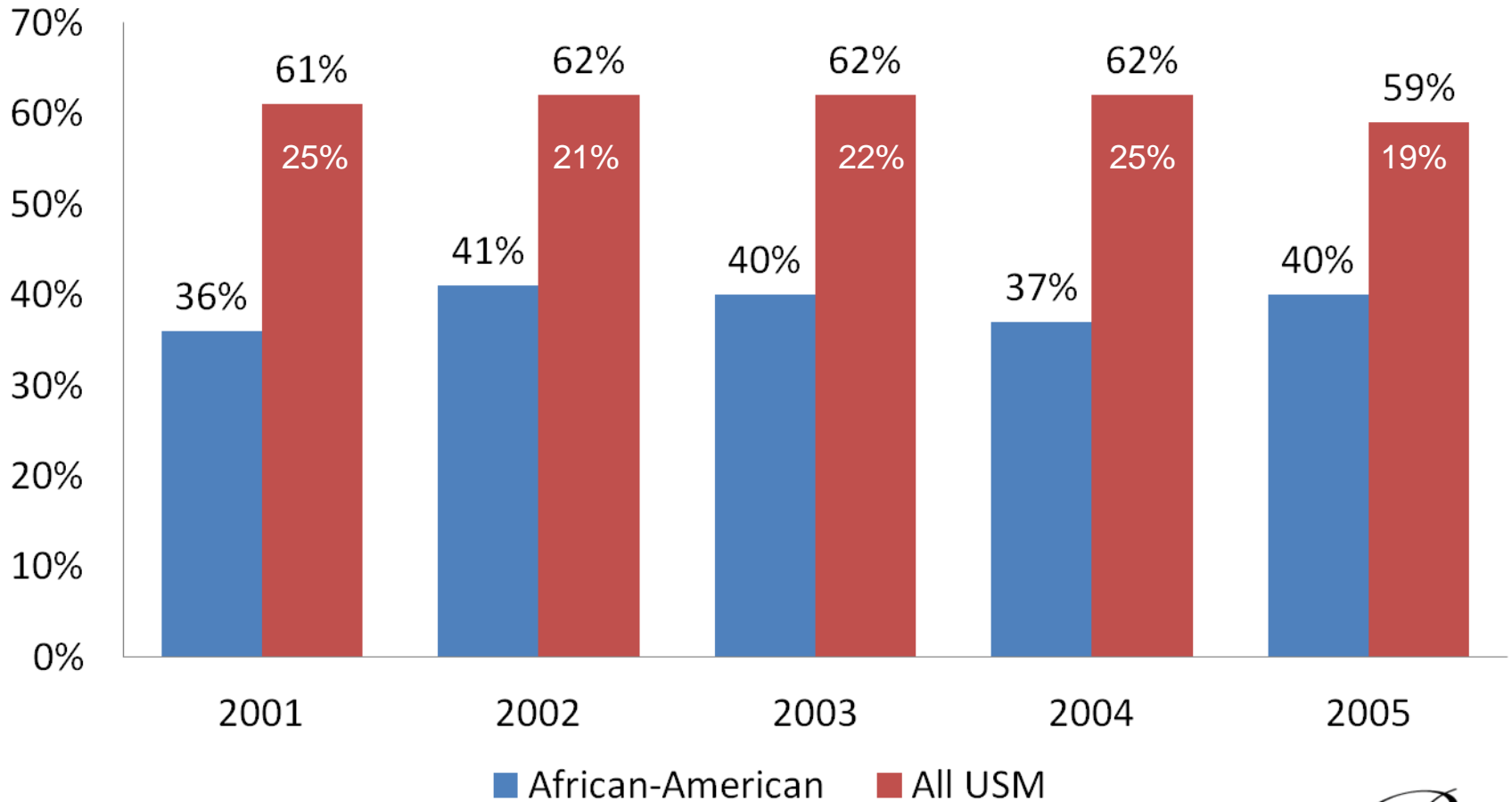
Our Working Definition

- The **USM Closing the Achievement Gap Initiative** addresses the threat posed by the state's widening college retention and completion gap for lower income and underrepresented students and the need to ensure that all Marylanders have the opportunity for educational attainment that leads to success.
- **BSU Achievement Gap** = African-American vs. all USM Students



USM Achievement Gap Report 2011

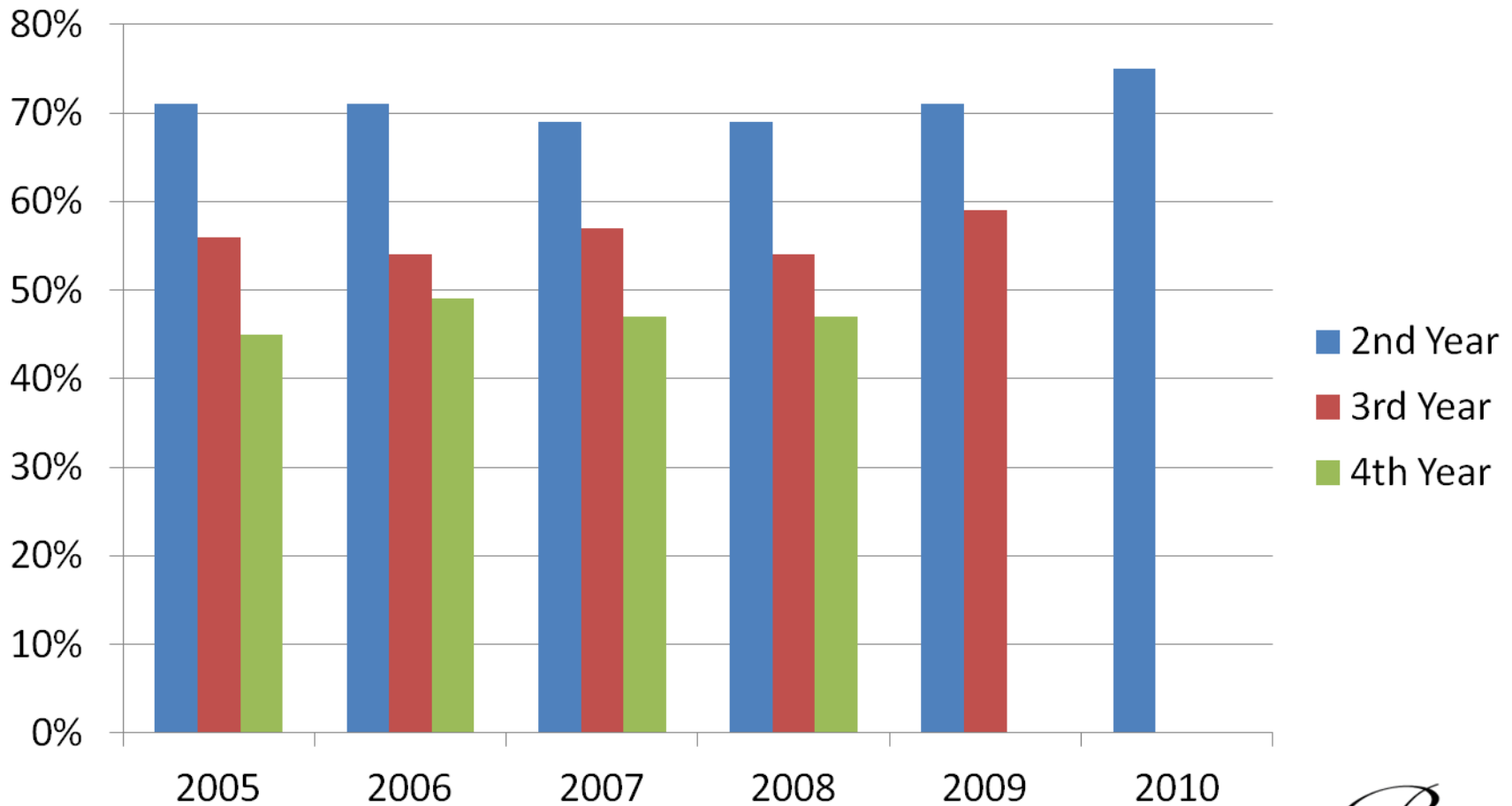
Six-Year Graduation Rates: Gap Student Group vs. Comparison Student Group



Source: IPEDS Data Center; BSU GRS Reports; USM Retention & Graduation Reports

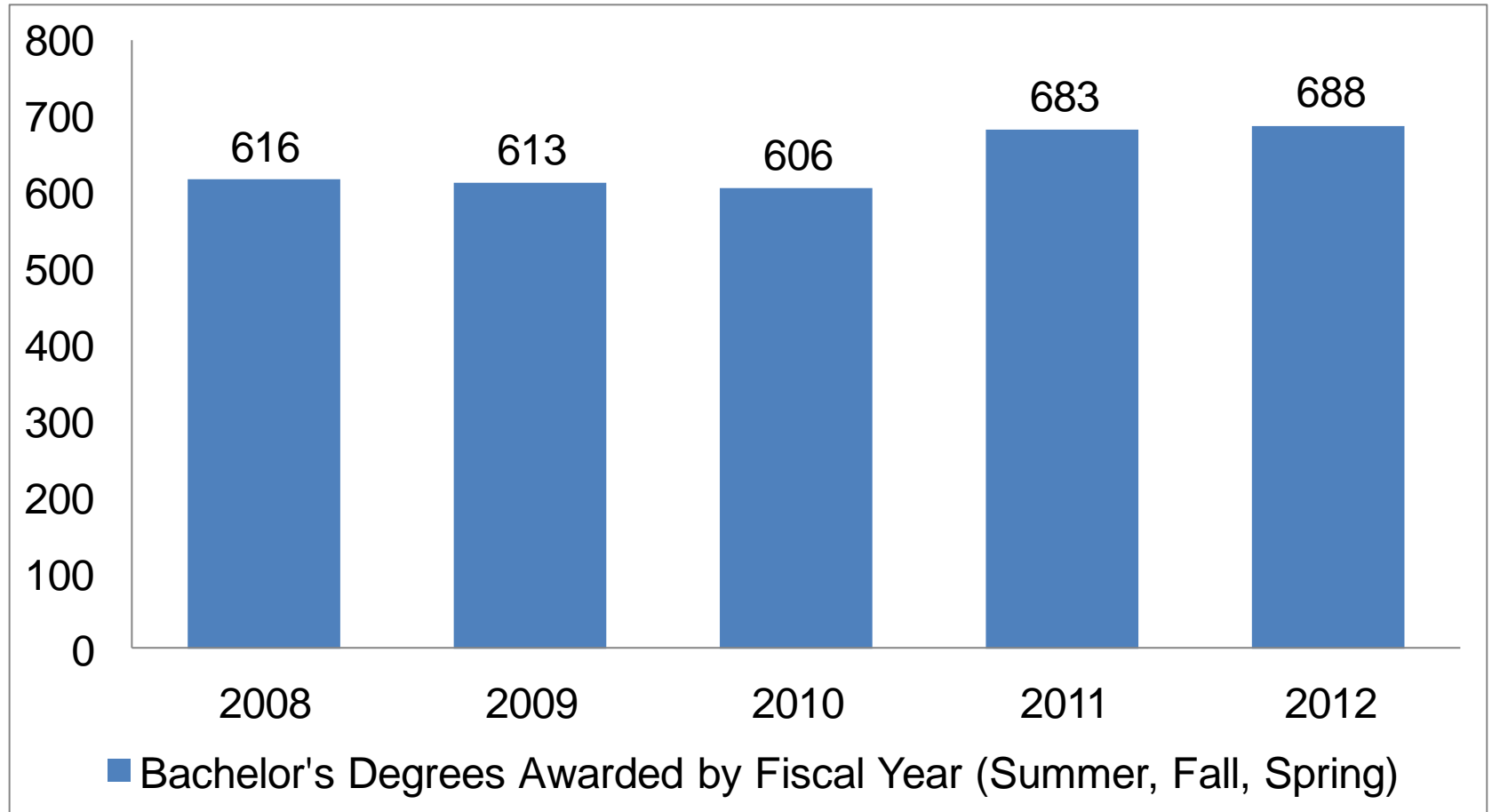
BSU Trends in Retention Rates

First-Time, Full-Time, Degree-Seeking Students



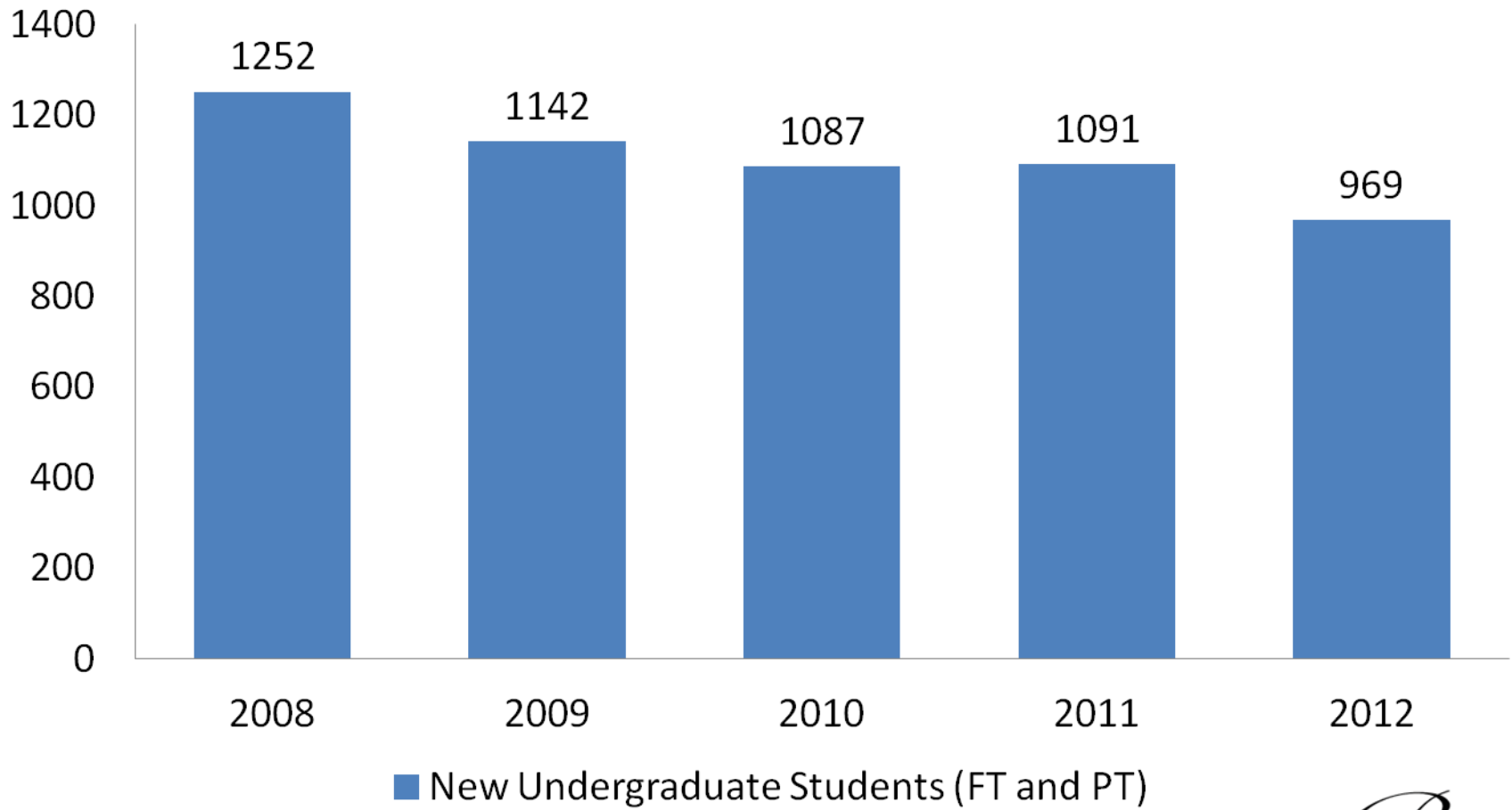
Source: USM Retention & Graduation Report

BSU Trends in Bachelor's Degrees Awarded



Source: Degree Information System (DIS)

BSU Trends in New Undergraduate Students

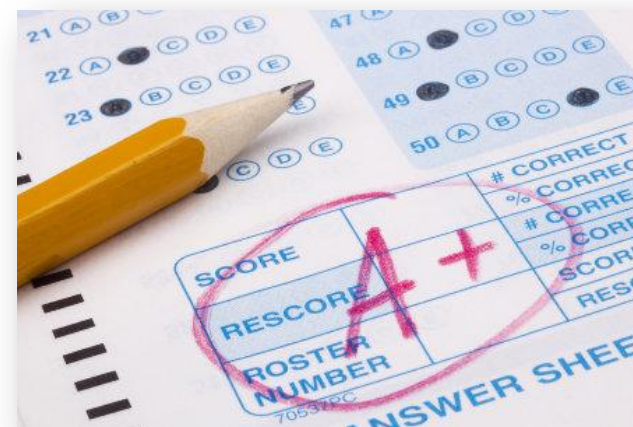


Source: Admissions Information System (AIS)

Closing the Achievement Gap

Fall 2012 Cohort Needing Remediation:

- Math: **76%** (362/477)
- English: **27%** (128/477)
- Reading: **24%** (114/477)
- Need all three: **9%** (45/477)



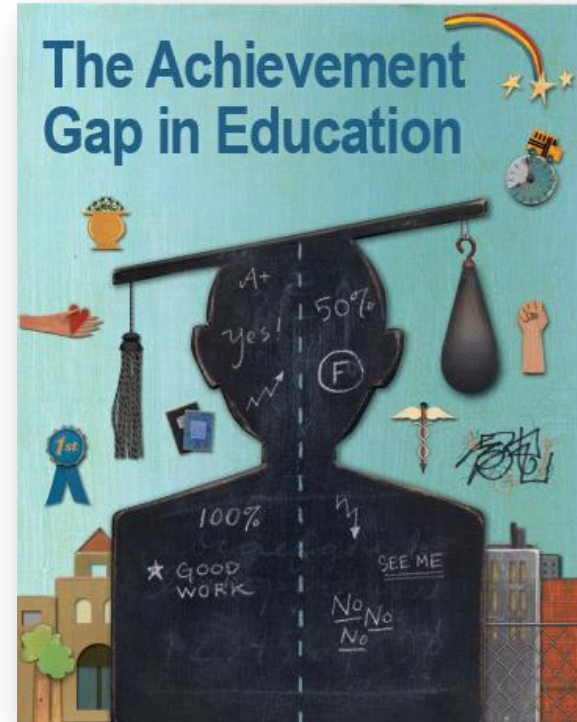
Fall 2011 Cohort First-Time Pass Rates in Remedial Courses:

- MATH 099: **65%**
- ENGL 100: **45%**
- READ 100: **38%**

Source: *BSU Access and Success Report*

Top Factors Affecting BSU Retention

- Financial Hardship
- Academic Standards
- Personal Issues



BSU Closing the Achievement Gap Initiatives

Affordability Issues/Financial Aid

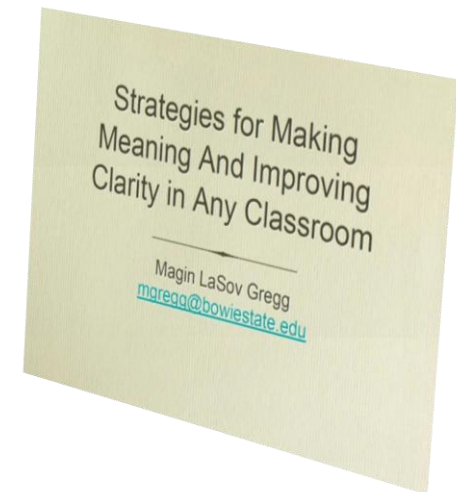
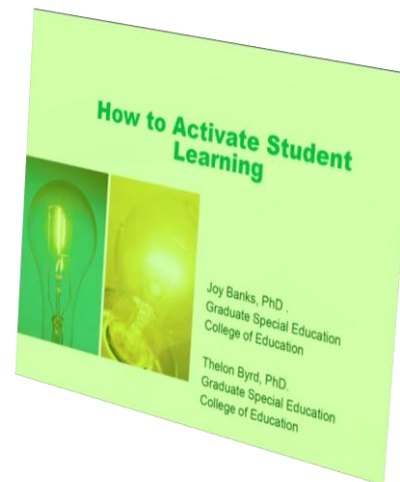
- Need-based financial aid

Academic Advising/Student Support Services

- Academic Advisement Center
- Knowledge Enhancement through Educational Programs (KEEP)
- Retention Coordinators
- Tutoring and Supplemental Instruction Center
- Bulldog Academy

Faculty Development

- Center for Excellence in Teaching and Learning (CETL)



Academic Transformation Landscape

USM's Center for Academic Transformation

- Support, coordinate and assess academic transformation activities on the campuses
- Raise external funds for system wide transformation activities
- Conduct research with external partners on the effectiveness of various new educational delivery platforms in improving learning outcomes and reducing costs of educational delivery
- Disseminate best practices among USM institutions and to the broader higher education community



Factors for Academic Transformation

- Tightening fiscal resources and need to allocate increasingly scarce resources
- Need to demonstrate effectiveness through improving student outcomes
- Need for Bowie State to align with Chancellor William Kirwan's and the Board of Regents' priorities
 - Closing the Achievement Gap
 - STEM and Competitiveness
 - Environmental Sustainability and Climate Change



MHEC Performance Funding Task Force

- In response to a charge in the 2012 Joint Chairmen's Report
 - Workgroup led by the Maryland Higher Education Commission
 - Includes representatives from USM, Morgan State University, St. Mary's College of Maryland, and the Maryland Association of Community Colleges
- Presented in this report is a performance-based funding (PBF) framework for public community colleges and 4-year institutions in Maryland.
 - Metrics aligned with State goals
 - Performance determined by **6 metrics** for 4-year institutions and **7 metrics** for the community colleges
 - Base budget not at risk



Key Visibility Initiatives for Bowie State University

National Emergency Preparedness & Response Research Center (NEPR)

- **NEPR Lead:** The Maryland Center at BSU
 - Partners: VisualMED Clinical Solutions Corp., Intelaform Inc., and Verizon Communications Inc.
- Applies state-of-art technologies to help move critical medical and public health information to respond to domestic threats including natural disasters, pandemics, and manmade catastrophes.
- Provides a platform for other potential exciting opportunities that will propel Bowie State to its rightful place of prominence and service in the region!



Education Innovative Initiative (EI²)



EI² Program Overview:

- Brainchild of BSU alumnus, Traviss Green, Chief Technology Transition Officer, Lockheed Martin Corp.
- Establish career pathways in Science, Technology, Engineering, Arts & Mathematics (STEAM) from PK-20
- Involves an innovative cloud-based technology platform
- Focused outside of the classroom and aligns value across education, academics, and business



Campus Updates

- Welcome New Vice President for Information Technology, E. Wayne Rose
- **URM Marketing Research Initiative**
- \$15 Million “BIG Campaign”
- **Strategic Plan Committee – July 1, 2013**
- BSU Faculty Transformation Funds
- **Faculty Advisory Council**
- Spring 2013 Commencement Location
- **HBCU Night in Annapolis – February 4, 2013**



THANK YOU.



HAPPY HOLIDAYS!