

May 1, 2016

Dear Dr. Burnim,

As we celebrate the tenth year of climate action on college and university campuses around the country, we thank you for your leadership and dedication as part of the Climate Leadership Network. The launch of the American College & University Presidents' Climate Commitment (ACUPCC) in 2006 ushered in an unprecedented era of change and transformative climate leadership in higher education. In October 2015, we, the presidents on the Climate Leadership Steering Committee, worked with Second Nature to integrate and rebrand the ACUPCC (and the Alliance for Resilient Campuses) as the Climate Leadership Network and the Climate Leadership Commitments.

We are thankful you have taken this important step to think and act at the leading edge of progress. We also want to recognize and thank your institution for fulfilling your Commitment by publicly reporting your progress annually to the Second Nature Reporting System and by paying dues.

Your Commitment Matters

The Climate Leadership Commitments aren't just platitudes. They have created tremendous impact and reinforce what we know to be true: strong leadership makes a difference. A recent University of New Hampshire study found that campuses that have signed the Carbon Commitment have 47% lower carbon emissions from purchased energy than non-signatories.

A Network of Leaders

The Climate Leadership Network represents the diversity of higher education in all fifty states, and by all sizes and types of institutions. Additionally, Climate Leadership Network signatories are over-represented in sustainability leadership rankings and are getting recognized for it. For example, **100% of the Top 10 Sierra Club Cool Schools are signatories**. Further demonstrating our global impact, Second Nature worked with the White House to create and support the America's Campuses Act on Climate Pledge leading up to international climate talks. Nearly 80% of the pledges were from Climate Leadership Network institutions.

Fulfillment

As members of the Steering Committee, we know that the Climate Leadership Commitments require more than simply pledging support. As a Network, we have a shared responsibility to long-term, strategic actions. We are committed to maintain the integrity of the Network through high standards of fulfillment. **Basic fulfillment of the Commitments involves publically submitting reports and payment of dues on an annual basis.** If an institution is not in fulfillment, it will be afforded a grace period, as well as hands-on guidance from staff, but will be removed from the Network after two

18 Tremont Street, STE 930, Boston, MA 02108 | 617.722.0036 | info@secondnature.org



consecutive years of non-fulfillment. We believe that holding ourselves and our peers to these high standards ensures that the Climate Leadership Network remains at the leading edge of sustainability in higher education.

Bowie State University's Status

Bowie State University has done a fantastic job in leading the Network through your on-going reporting, consistent dues payments, and innovative actions. Second Nature provides exclusive opportunities to institutions like yours that regularly meet and exceed the baseline standard. This includes eligibility to receive a Climate Leadership Award, opportunities to present at the bi-annual Summit, and be regularly highlighted in Second Nature's publicity materials. Additionally, you demonstrate to the Network and to higher education institutions around the world what progress towards a shared, ambitious goal looks like in practice. Congratulations!

We are continually shown that we are stronger together, and we are proud to be able to work with this network of dedicated institutions who are making a real difference, and we look forward to your continued leadership.

Sincerely,




Wim Wiewel,
President, Portland State University,
Chair, Steering Committee


Esther Barazzone, President Chatham University
Michael Crow, President, Arizona State University
Debra Derr, President, Mt. Hood Community College
John Dunn, President, Western Michigan University
Paul Fonteyn, President, Green Mountain College
Jonathan Gibraltar, President, Wells College
Jean Goodnow, President, Delta College
Dianne Harrison, President, California State University, Northridge
Jacqueline Johnson, Chancellor, University of Minnesota-Morris
Elizabeth Kiss, President, Agnes Scott College

Steven Knapp, President, George Washington University
Linda Lujan, Chief New Ventures Officer, Maricopa County Community College District
Scott Miller, President, Virginia Wesleyan College
John Sbraga, President, Bristol Community College
Jake Schrum, President, Emory & Henry College
Mariko Silver, President, Bennington College
Greg Smith, President, Central Community College
Paul Zingg, President, California State University, Chico




American College and University Presidents Climate Commitment New Emphasis on Adaptation and Resilience*


Now Combined



The Climate Commitment

Integrates a goal of carbon neutrality with climate resilience and provides a systems approach to mitigating and adapting to a changing climate. Designed to blend these two critical components of climate leadership.




Updated

Prior ACUPCC signatories placed here

The Carbon Commitment

Focused on reducing the emissions of harmful greenhouse gases to zero and mitigating campuses' contribution to climate change.



New

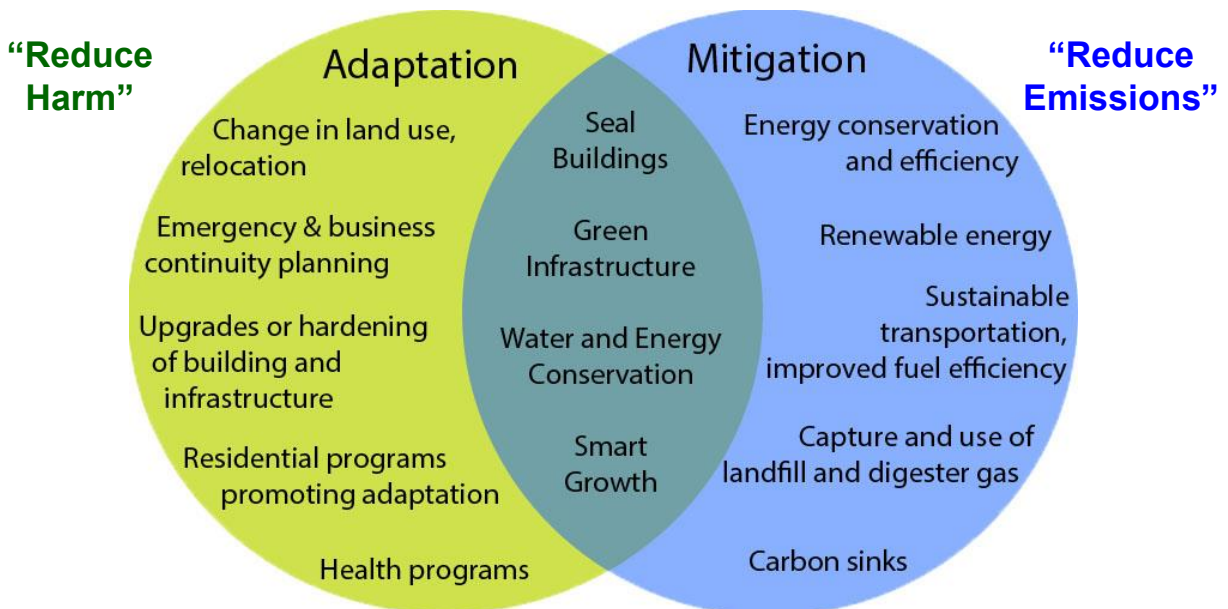
So far, four institutions have signed

The Resilience Commitment

Focused on climate adaptation-specific goals, as well as building community capacity to deal with a constantly changing climate and resulting extremes.

*Taking steps to avoid or minimize those climate change impacts we can address, while increasing the ability of our organizations to “bounce back” from the impacts that cannot be avoided.

What is Climate “Adaptation?” How does it differ from Mitigation?



Source: Presentation, “The Why’s and How’s of Adapting to Climate Change,” by Lara Whitley Binder, University of Washington

Source: <http://ccap.org/what-does-climate-resilience-look-like/>

The American College and University Presidents Climate Commitment

Why Adapt? Why now?

- Significant climate change impacts are projected, and impacts over the next few decades are virtually certain.
- The State's residents, businesses, and local and state governments—and its universities—are on the “front line” for dealing with climate change.
- Decisions with long-term impacts are being made every day. Today's choices will shape tomorrow's vulnerabilities.
- Significant time is required to motivate and develop adaptive capacity, and to implement changes.
- Proactive planning is often more effective and less costly than reactive planning, and can provide benefits today.

Sample Adaptive Actions:

Administrative/Political

- Enhanced emergency and business continuity planning (ongoing)
- Better communication (town/gown/authorities)
- Climate/effects monitoring and data collection
- Enhanced heat response systems/programs
- Health & disease response (West Nile, Lyme, etc.) programs.

Physical/Spatial

- Control programs for invasive species
- Weatherproofing
- Natural resource protection
- Building/infrastructure retrofits
- Relocation of vulnerable facilities
- Upgrades to drainage, sewers, culverts, grading

Adapted from: Presentation, "The Why's and How's of Adapting to Climate Change," by Lara Whitely Binder, University of Washington

American College and University Presidents Climate Commitment New Emphasis on Adaptation and Resilience: Final Thoughts



- Adapting to climate change is not a one-time activity. It is a continuous process that does not end.
- Adapting to climate change is bigger than the campus. It is a community, regional and Statewide effort (and beyond) and will benefit all.
- There is no “one-size-fits-all” approach to managing climate change impacts. Activities must be tailored to your campus, community.
- Much can be gained from addressing the climate and non-climate stresses that contribute to climate vulnerability.

Adapted from: Presentation, "The Why's and How's of Adapting to Climate Change," by Lara Whitely Binder, University of Washington